

Historic, Archive Document

Do not assume content reflects current scientific knowledge, policies, or practices.

BALDWIN'S

JAN 28 1944
Dept. of Agriculture

55TH YEAR

1944 CATALOG

**NEW ROBINSON
STRAWBERRY**
Makes more Plants
Bears more Berries
(See page 4)



**VICTORY
STRAWBERRY
GARDEN**

50 Robinson 50 Catskill
50 Premier 50 Gem Ev'b'g

ALL for
\$3.95

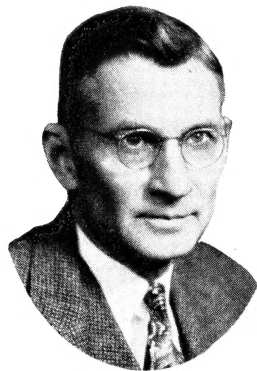
BOYSENBERRY
Mammoth Size
Different, Delicious
Flavor
(See page 15)

OUR GREETING FOR 1944

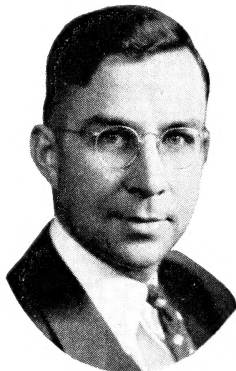
"Food Fights For Freedom" and the people of America are producing and conserving every bit of food possible and thereby playing an important part in winning this war. This year, even more than last, everyone will grow all the food possible because the need is greater for our fighting men everywhere, for our allies and for ourselves. Fruit is food. This year as always, Baldwin's nursery stock, "Dependable Since 1889" is ready to help you grow good crops of fine fruit. Besides knowing that you are doing a real part in the war effort there is a great satisfaction in raising your own fruit for your own use. And, too, don't overlook the big profits to be made right now with fruit for market. A small space planted to strawberries, raspberries, blackberries and Boysenberries will produce a good cash crop—and do it quickly.

As to the supply of nursery stock, we are fortunate in having a reasonably good stock of most everything. The demand is greater than ever, however, so we hope you will order as soon as possible because when our stock is sold we cannot get more. Due to the general labor shortage it is not possible to offer you quite as complete a selection as in normal times, but you will find everything you need—even vegetable garden seeds.

Let us say again that your business year after year is truly appreciated. On our part we try to give you the best nursery stock it is possible to produce—the kind you can depend on. You want to grow better fruit this year and every year. Write us if we can help you.



O. A. D. Baldwin



G. W. R. Baldwin

Highest Quality VEGETABLE SEEDS

For Your Victory Garden on Page 30

Every one who has even a few feet of space can easily grow enough vegetables for summer use and to can for winter. Nutritious vegetables keep us healthy. These seeds are grown for us by one of the country's leading seedsmen and are of the highest quality.

BALDWIN'S GUARANTEE

For 55 years the Baldwins have backed up this guarantee to the entire satisfaction of their thousands of customers everywhere. We guarantee every plant, tree, shrub or bulb sold by us to be first class, free from injurious disease or insects, and true-to-name. We further guarantee our stock to reach you in good growing condition by express or parcel post and will replace free of charge any that does not, when we are notified within 5 days of receipt of stock. Also we will, on proper proof, replace or refund the purchase price of any stock that proves untrue to name. We are, of course, not liable for more than the purchase price of stock ordered.

All contracts and agreements are made subject to flood, drought, fire, frost, crop failure or other causes beyond our control.



REMEMBER—

1. Every one who has room for a small fruit garden can cut grocery bills and provide plenty of healthful fresh fruit by growing such quick bearing fruits as strawberries, red and black raspberries, blackberries and Boysenberries.
2. Strawberries are a staple and valuable American food because they are low in cost, grow almost anywhere, produce a lot of fruit in a small space, are high in vitamin value, and are especially suited for use in so many ways—fresh, canned, jellies, jams, or frozen. Everbearing kinds planted this spring will bear this summer; other kinds in June, 1945. Michigan certificate of nursery inspection attached to every shipment.



THIS VALUABLE
PLANTING GUIDE

FREE!

To every customer who sends us an order of \$1.50 or more by May 1st, 1944, we will send this Planting Guide FREE.

This 20-page "How to Plant" booklet is packed with practical information on plant-care of most every kind of nursery stock. It tells the story in pictures—you cannot go wrong. Regular price: 25c.

CASH DISCOUNTS FOR EARLY ORDERS

10% on orders sent by Feb. 10th
5% on orders sent by Mar. 10th

These discounts apply to all prices in the catalog except special collections and where otherwise noted, or special prices quoted by letter. Cash in full must be sent with order.

Add Extra Stock for the Amount of Discount if You Prefer.

STRAWBERRIES

Our Specialty For Over 50 Years

Strawberries Will Produce the Fruit You Need Quickly

You can make money every year with strawberries. They show a record of good profits through "good" and "bad" years. Strawberries are easy to grow, produce a big crop in small space, and remember, they are the only fruit that will bring you a full crop in one year from planting.

Start with good plants. Years of experience are behind our plants—guaranteed true-to-name and in healthy planting condition when you get them. You cannot get better anywhere at any price. Be certain of good growth and good crops. We offer only those varieties—both old and new—that we know are dependable and profitable. We urge you not to delay your order. This year of all years—plant strawberries.

PREMIER

STILL THE GREAT COMMERCIAL BERRY

When all is considered PREMIER is the most profitable strawberry variety grown today. It puts a big crop of fine appearing berries on the market first every time and does it in spite of frosts that often kill other varieties. These two facts are PREMIER'S greatest points of superiority as a dependable money-maker. PREMIER eliminates crop

failures, and by ripening five days to a week earlier than any other kind, it never fails to command high prices. Always produces its good crops on a wide range of soils and climates throughout the country.

Actually millions more Premier plants have been sold the past few years than any other kind. Premier continues to be widely planted in larger quantities than any other early berry. Growers know that PREMIER is an unflinching money-maker every year. Consumers demand it. You will need to grow PREMIER—and plenty of them—to be in the berry business profitably.

Order at once so we can reserve yours. Our plants are guaranteed true-to-name, healthy and vigorous. You can depend on them to make money.



Premier

Why Premier is Better

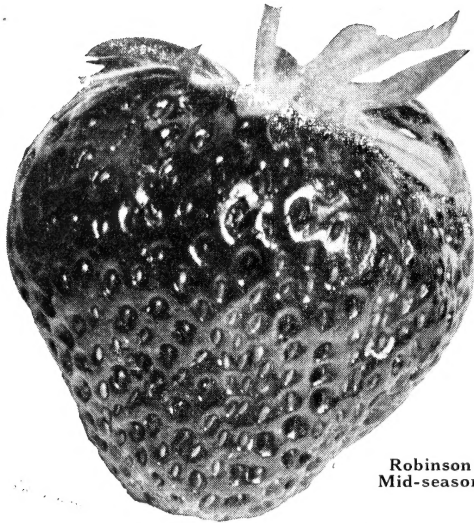
1. First to ripen.
2. Remarkably frost resistant.
3. Long fruiting season.
4. Unusually large crops.
5. Size above average.
6. Bright, glossy, solid color.
7. Uniform, attractive shape.
8. Firm berry, excellent shipper.
9. Buyers pay a big premium for Premier.

Earliest of All— Frost Proof

If you want to make more money, plant Premier this spring!

PREMIER PRICES

25 for.....	\$ 0.75
50 for.....	1.20
100 for.....	1.85
200 for.....	3.05
300 for.....	4.25
400 for.....	5.30
1000 for.....	11.45



Robinson
Mid-season

(See also front cover)

ROBINSON PRICES

25 for.....	\$ 1.20	200 for.....	\$ 5.95
50 for.....	2.10	300 for.....	8.50
100 for.....	3.75	400 for.....	10.75
1000 for.....	\$24.50		

ROBINSON

THE NEW SUPER BERRY

From all results so far this new Robinson can well be called a super berry. A strong, vigorous grower, it produces an unbelievable number of new plants in most any soil. This insures a big crop and the berries are above average in size because each plant usually has only one fruit stem and has lots of vitality to produce these big berries.

Quality—Color—Firmness—Size

Robinson berries are finest flavor, good glossy red color, big in size and firm. All these points make it an ideal berry for marketing near by or far away at the top price, and they also make a berry that is just what you want in your garden to eat and can.

Many growers say that Robinson is the one berry that may take the place of Premier for market because of more certain crops of finest looking fruit. For home use its quality and flavor are better than Premier and it begins to ripen about 3 or 4 days later. Originated here in Michigan's famous strawberry section and generally introduced for the first time this year, we expect Robinson to carry further the good reputation of Michigan strawberries.

You will want to plant this excellent new strawberry this year.

★ ★ ★ CLERMONT ★ ★ ★

Beautiful Big Red Berries

Outstanding for Market and Home Use

Last June in picking Clermont and Premier side by side Clermont plainly showed its greater size, heavier yield and more glossy, attractive appearance. That is saying a good deal but it is true. The soil was rather light sandy loam.

Ripens with Premier

Clermont is really worth planting everywhere. Introduced by N. Y. Experiment Station about 10 years ago it has proven outstanding for exceptionally heavy plant growth and big crops of large, smooth, fine colored berries. You can't help but exclaim over the unusually brilliant, beautiful appearance of these ber-

ries—and their flavor is as superior as their appearance. Recommended for general northern planting—a hardy, vigorous grower. Firm fruit makes a good market berry. And remember, Clermont berries are unusually fine flavored.

CLERMONT PRICES

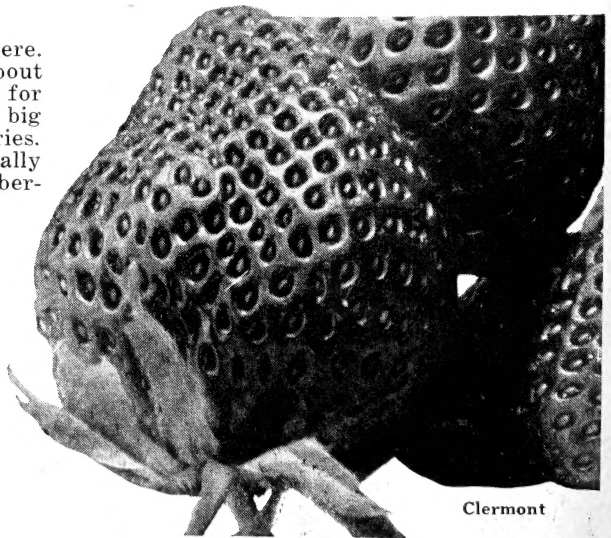
25 for..	\$ 0.75
50 for..	1.25
100 for..	1.95
200 for..	3.25
300 for..	4.60
400 for..	5.90
1000 for..	12.45

**GARDEN
SPECIAL**

50 Clermont
50 Robinson

Only

\$2.25



Clermont

Catskill

Best and Most Profitable Midseason Berry

It is only once in a while that a new variety proves so satisfactory in every way and so profitable as Catskill has done. Its biggest feature is its enormous crops of big, fine, bright scarlet, green-capped berries. Picking begins just after the early kinds and Catskill berries are of great size and firmness to the last. Plants are unusually strong, hardy, healthy little affected by diseases and will produce their great yields in all soils and seasons. With Premier for early and Catskill for midseason to late, you have a combination for top prices over the best of the strawberry season.

Enormous Crops of Fine, Big Berries

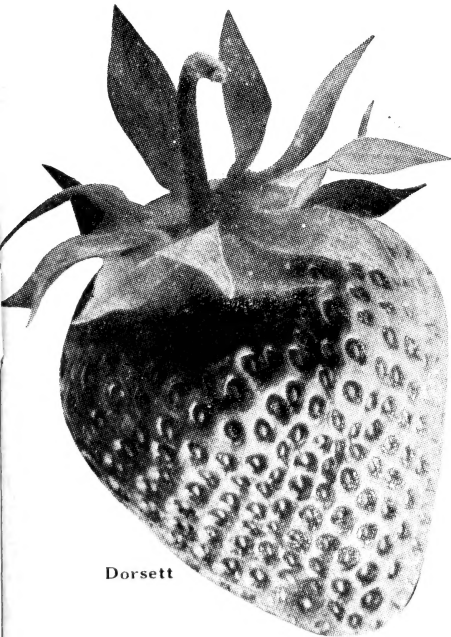
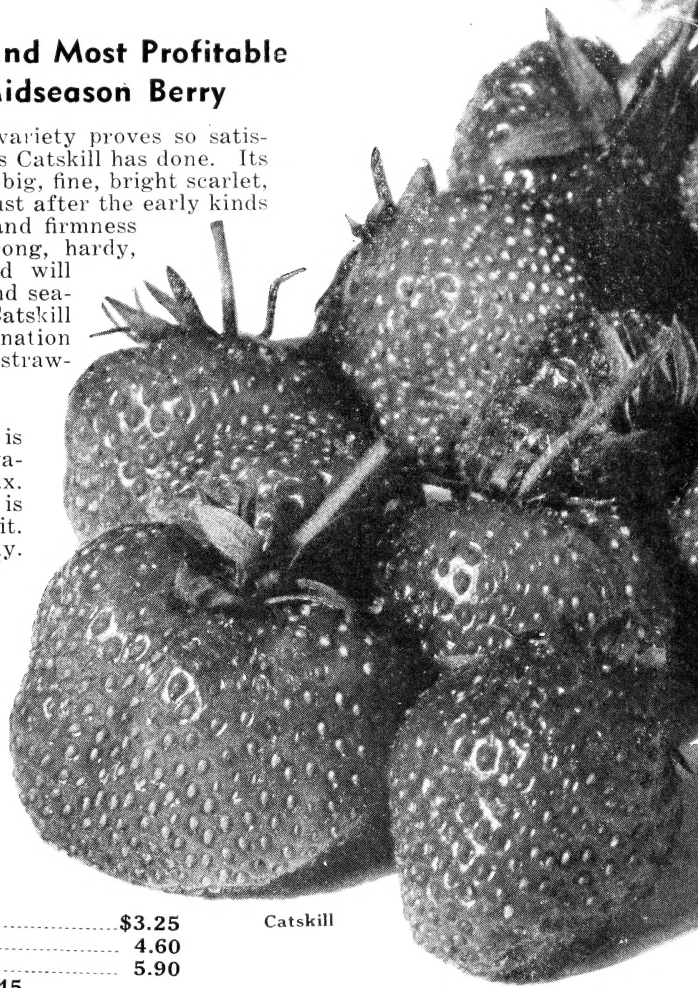
Such a splendid midseason berry is needed to follow the fine very early varieties Premier, Dorsett and Fairfax. CATSKILL does it successfully, and is making money for everyone who grows it. It will pay you and we recommend it fully. For home garden, Catskill is ideal because its fine flavor, rich color and large size are just right for canning and preserving or fresh for table use.

New York Experiment Station, the originator, says:—"Catskill is notable for being very large and very productive. Plants are vigorous and free from leaf-spot. Ripens later than Premier and is of better quality as well as being larger. Much more productive than Dorsett and Fairfax."

BE SURE TO PLANT CATSKILL THIS SPRING

CATSKILL PRICES

25 for.....	\$0.75	200 for.....	\$3.25	Catskill
50 for.....	1.25	300 for.....	4.60	
100 for.....	1.95	400 for.....	5.90	
	1,000 for.....		\$12.45	



Dorsett

DORSETT

For Big Early Crops

One of the best of all varieties for big regular crops. You can depend on it for good profits every year. Dorsett has been widely planted in all fruit sections and has come through with paying crops every time. We advise you to plant it. You need Dorsett to get the most out of your berries.

Every Desirable Strawberry Feature

Experiment Stations in Michigan, Illinois, New York, and Washington, D. C., do not hesitate to say that it is superior to Premier in size and quality. Commercial growers like Dorsett because it makes money. It does so because its firmness, big size, fine flavor and wonderfully bright color are just what both wholesale buyers and the housewife want. Originated by the U.S. Dept. of Agriculture at Washington, 1923, it has proven superior in these points.

1. Ripens almost as early as Premier.
2. Size and yield above average.
3. Very vigorous grower, making almost as many plants as Blakemore—assuring good crops even in poor seasons.
4. Firmer berries—fine shipper.
5. Light red, glossy berries that buyers pay more for.
6. Flavor superior to any other unless it is Fairfax.

With these features combined in one berry, you have the ideal berry for home or commercial use. You will make no mistake in a good planting this spring. We have a stock of fine, genuine Dorsett. Don't wait—there is a big demand.

DORSETT PRICES

25 for.....	\$0.75	200 for.....	\$3.05
50 for.....	1.20	300 for.....	4.25
100 for.....	1.85	400 for.....	5.30
	1,000 for.....		\$11.45

Grand Champion

Remarkably Long Fruiting—40 Days

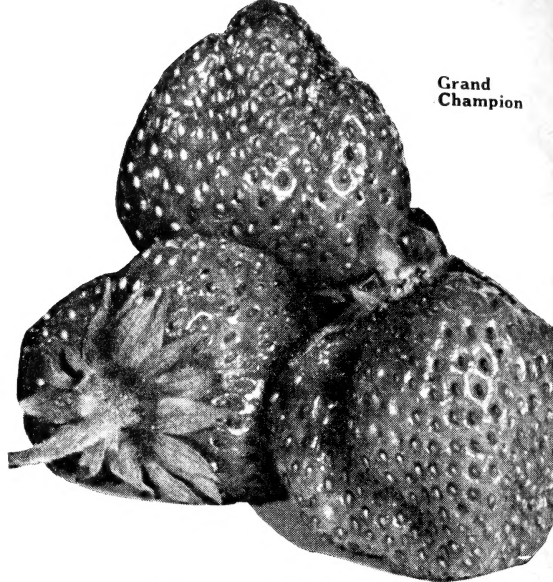
Tall vigorous plants protect early blossoms from frost and also keep the last berries fresh and bright. More fruit growers are planting it every year. Make your planting this spring.

**BIG CROPS—GOOD QUALITY—
GREAT SIZE**

GRAND CHAMPION is a money-maker. Unusually frost resistant; ripens over an unbelievably long season beginning a few days after Premier—sometimes lasts 40 days. Growers make big profits with **Grand Champion** because of its big crops, good quality, great size and good shipping qualities that put it on the market for top prices. We recommend it for your planting.

Ours are genuine **GRAND CHAMPION**. Plant this spring.

Grand
Champion



GRAND CHAMPION PRICES

25 for.....	\$0.75	200 for.....	\$3.25
50 for.....	1.25	300 for.....	4.60
100 for.....	1.95	400 for.....	5.90
		1000 for.....	\$12.45

FAIRFAX—Early

Leads All In Firmness and Quality

Like Dorsett, Fairfax is a superior berry, particularly in firmness and flavor. Originated by U. S. D. A. in 1925. Big profits to growers and rapidly increasing plant sales show that Fairfax is making good as one of the leading varieties.

How Fairfax Differs From Dorsett

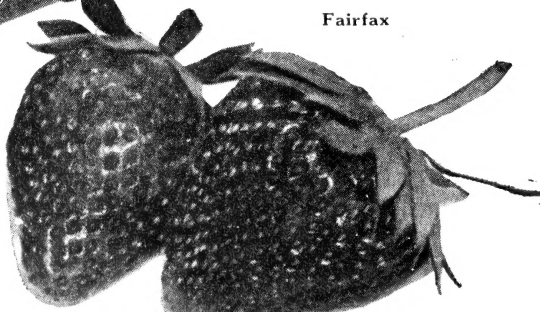
1. Called the most deliciously flavored of all. 2. Even firmer berries. 3. Berries are larger. 4. Color dark red, turning darker after picking. 5. Does not make quite so many plants. 6. Not quite so productive as Dorsett but will average as good as Premier.

WHICH TO PLANT? Both are wonderfully fine berries. Both are of superior size and flavor, making either desirable for home gardens. The lighter, more attractive color of Dorsett may make it more profitable for the general market. But the somewhat larger size and exceptional quality of Fairfax are to be considered. **BE SURE TO PLANT SOME FAIRFAX THIS SPRING.**

FAIRFAX PRICES

25 for.....	\$0.75	200 for.....	\$3.25
50 for.....	1.25	300 for.....	4.60
100 for.....	1.95	400 for.....	5.90
		1000 for.....	\$12.45

Fairfax



SENATOR DUNLAP Old Reliable Money-Maker

Senator Dunlap (or Dr. Burrill) is probably better known throughout the country than any other strawberry. It has the reputation of producing full crops in a wider range of soil and climate than any other variety. No wonder growers in nearly every state in the Union order more of this old reliable berry every year. Today Senator Dunlap is one of the three or four strawberries that buyers know and ask for throughout the country.

Certain Crops Everywhere

Uniform berries of dark red color. Splendid shipper and ready seller because of its attractive appearance.

Many canning factories want nothing but Senator Dunlap and contract for thousands of cases yearly. They know it always holds its shape and rich color long after canning—and that the flavor lasts. Last year we sold out of Dunlap early and the demand is equally heavy this year. We have a good supply but urge you to order yours early. Order yours at once and we will reserve them. Ripens Mid-Early.

SENATOR DUNLAP PRICES

25 for.....	\$0.60	200 for.....	\$2.35
50 for.....	.90	300 for.....	3.10
100 for.....	1.30	400 for.....	3.75
1000 for.....		\$7.45	

AROMA

Most Profitable Late Berry

Look over any government report of strawberry production and you will see that growers in those sections where Aroma is widely grown, ship a full crop every season and regularly receive top prices for their Aroma. In spite of any newer late varieties it is still the best and most satisfactory late berry for general commercial planting in all fruit sections. It is a fancy market berry.

A steady producer of big round, deep red glossy berries of excellent eating quality. Tough skin and firm flesh make a splendid shipper. Produces its big crop on any good soil.

AROMA is unusually mild and sweet. A fancy berry in the truest sense of the word, which greatly adds to its marketability at top prices. Steadily growing in favor for the last 15 years; has proven its worth under all conditions. Our guarantee is behind this variety in every respect.

AROMA PRICES

25 for.....	\$0.70	200 for.....	2.80
50 for.....	1.10	300 for.....	3.90
100 for.....	1.75	400 for.....	4.75
1000 for.....		\$10.45	

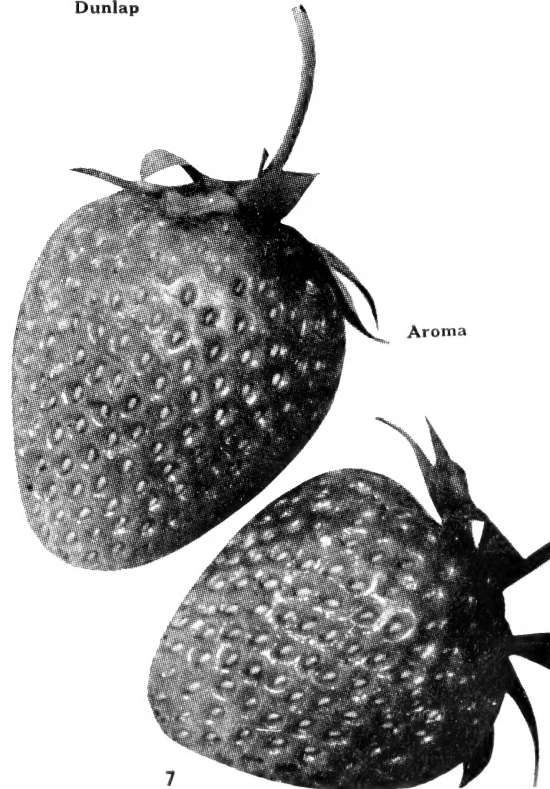
GIBSON—Mid-Early

We are growing a fine lot of plants of this old favorite variety for those of our customers who prefer it. Gibson's big, strong plants always produce a full crop.

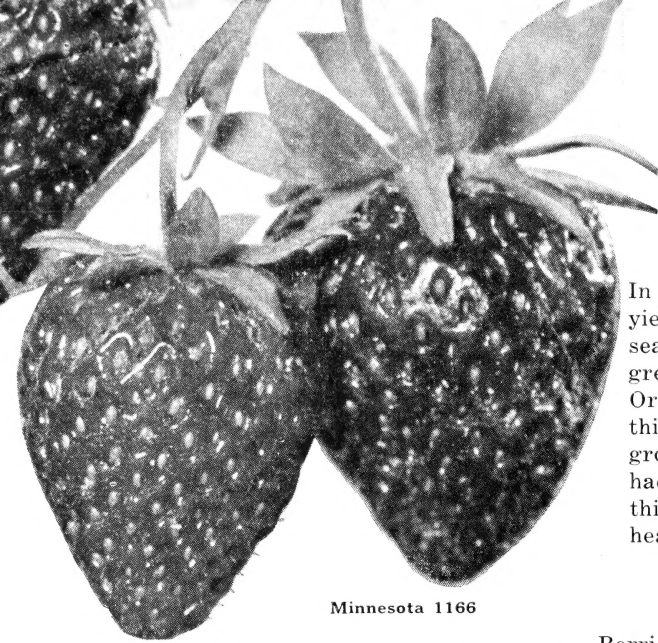
25 for.....	\$0.65	200 for.....	\$2.60
50 for.....	1.00	300 for.....	3.60
100 for.....	1.65	400 for.....	4.35
1000 for.....		\$9.45	



Senator Dunlap



Aroma



Minnesota 1166

Minnesota 1166

EVERBEARING

Summertime's Most Delicious Fruit

In the past five years Minnesota 1166 has out-yielded both Mastodon and Gem. This past season the sturdy plants were loaded with great berries from July until November 2nd. Originated by the Minnesota Expt. Station, this everbearer is one of the hardiest berries grown. In 1942, 1,200 plants set in April had made over \$500 by November 18th. We think Minnesota 1166 is about the finest and heaviest producing Everbearer we have seen.

Ripens Over Long Season July to November

Berries are rich, solid, dark red. No green tips or spots. Giant size with a rich, sweet flavor. Firm and so easy to hull. Very good plant maker—better than Mastodon and about like Gem. A few plants in the garden will supply you.

Easy To Grow In Any Garden

Enjoy your own fresh Strawberries from your garden this summer. They are delicious, healthful and economical—summertime's most delicious fruit. Plants are in big demand because of its outstanding performance, so order yours early.

MINNESOTA 1166 PRICES

25 for.....	\$1.75	100 for.....	\$ 5.95
50 for.....	3.25	200 for.....	11.40
		300 for.....	\$15.50

Surplus Strawberry Plants

Each day there are some plants dug extra and rather than throw these away we offer them at these low prices. All are standard, June-bearing kinds (no everbearers), fresh dug, labeled true-to-name.

Our selection, 300 or more. Prices net, no discount. 300 for \$2.95; 500 for \$3.90; 1000 for \$6.45.

Green Mountain

An Everbearer with a Spring Crop As Well

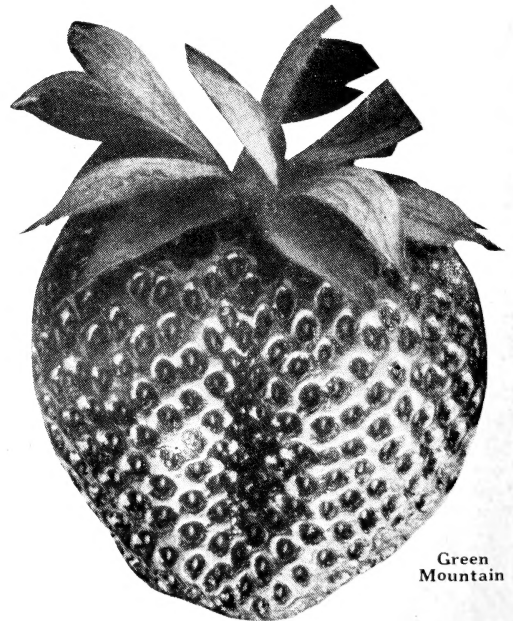
This new variety from Vermont has been grown long enough and widely enough to establish itself as a good everbearer and also as a fine heavy bearing very late spring berry. Usually recommended for cold climates and rich soils. June berries are uniform conic; fall berries are long and more flat. Fall fruit is of good quality, dry and firm for long shipment; bright and shiny with prominent yellow seeds. Fall crop is at its best in September and October.

Great, Heavy-rooted Plants

Our Green Mountain plants last spring were the largest, sturdiest, longest rooted plants of any variety. Such plants are certain to grow better for you and are sure to produce a greater crop of fine berries in both spring and fall.

GREEN MOUNTAIN PRICES

25 for.....	\$1.40	100 for.....	\$4.75
50 for.....	\$2.60	200 for.....	\$8.45
		300 for.....	\$10.50



Green Mountain

Gem Everbearing Strawberries

Make Money This Fall With Gem

Gem is the everbearer fruit growers have been looking for, because, unlike all other everbearers, it is an excellent plant maker on good or poor soils and in wet or dry seasons. This fact means that it can be depended on for good crops every year. Here we have a really fine fall berry of good size, fine flavor and unusual firmness.

Productiveness—Flavor—Firmness

- 1. Productiveness.** GEM makes so many more plants than other everbearers that it produces many more berries.
- 2. Flavor.** A true strawberry flavor—something most everbearers don't have.
- 3. Firmness.** Remarkably firm—only everbearer that reaches market in really first class shape.
- 4. Profits.** Because of size, firmness and sure crops—good profits are certain.

MICHIGAN EXP. STATION SAYS:

"Gem is certainly a wonder as far as plant making is concerned and it certainly bears well."

You can plant Gem with full confidence of a full fall crop and good profits.

GEM PRICES

25 for.....	\$0.95	200 for.....	\$4.60
50 for.....	1.60	300 for.....	5.95
100 for.....	2.65	400 for.....	7.75
1000 for.....	\$16.95		

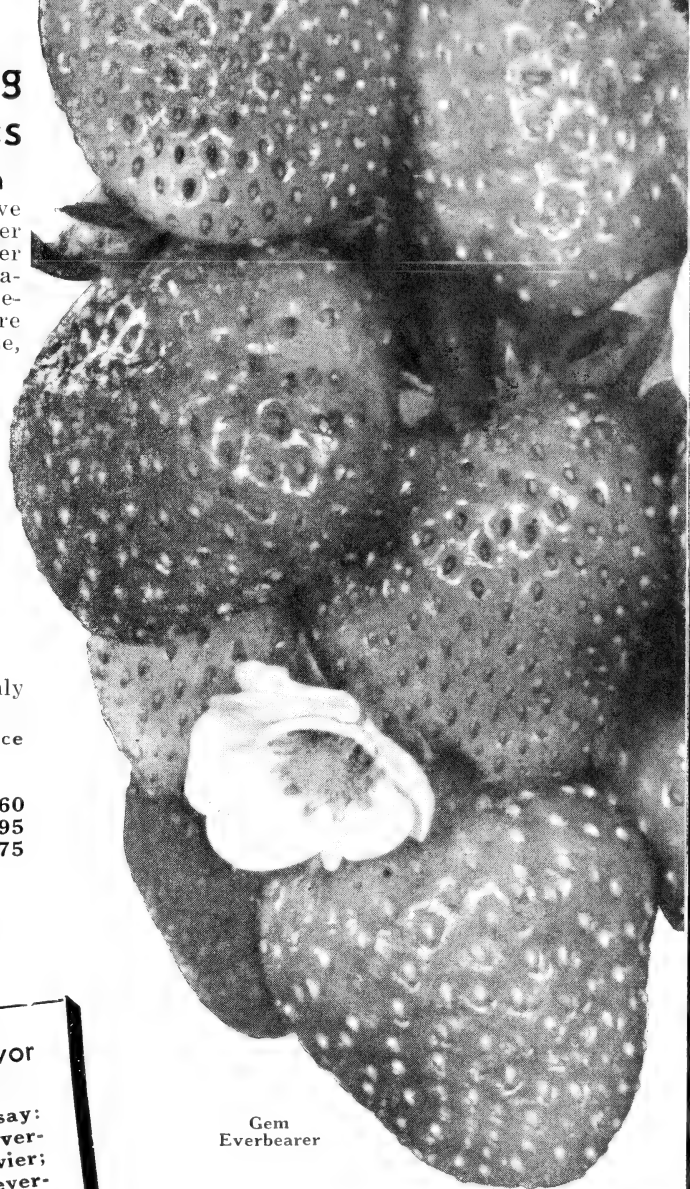
Plant this spring.

Have fruit 90 days after planting.

Pick FULL CROP through this fall.

A second FULL CROP next spring.

A third FULL CROP next summer and fall.



Gem Everbearer

WAYZATA Finest Flavor of All

Government Experiment Stations say: "Wayzata is far superior to any other everbearer; large as Mastodon; bears heavier; most attractive appearance; best of all everbearers in quality and flavor."

Wayzata has proven every one of these statements in home gardens and commercial plantings all over the country. If you are not now growing it, you should do so because Wayzata is the best everbearer and finest flavored strawberry we have ever seen.

It does not make many plants but each plant makes several fruit bearing crowns, each crown full of fruit stems so that the yield of one plant is many times the average. More plants can be set on small space and greater crops picked. Exceptionally strong growers on any good soil; withstand drought tips markedly well. Red clear through—no green tips. Wayzata is hardy and frost resistant. PLANT IN APRIL—BEGIN PICKING IN JULY—KEEP PICKING INTO OCTOBER.

WAYZATA PRICES

25 for.....	\$1.75	100 for.....	\$ 5.95
50 for.....	3.25	200 for.....	11.40

MASTODON

Most Widely Planted Everbearer

Everyone wants and needs a good everbearer that can be depended on to produce plenty of good fruit regularly in the late summer and fall. Mastodon has shown year after year that it will do this in all sections and under most any soil and weather conditions. It is entirely satisfactory for the home garden or commercial patch. Our Mastodon Plants are guaranteed true-to-name and will do these things for you. Through years of proper selection and propagation they are superior in vitality and productiveness. The berries are "Mastodons" in size.

Plant plenty Mastodon and have good fruit to sell at top prices this summer and fall. ORDER YOURS TODAY.

MASTODON PRICES

25 for.....	\$1.25	200 for.....	\$ 7.25
50 for.....	2.30	300 for.....	9.90
100 for.....	4.15	400 for.....	12.85
1000 for.....	\$26.50		

Grow RHUBARB

Grow More for Garden and Market

Rhubarb and Asparagus should be in every garden because they are delicious and healthful. Everyone needs more of them both fresh and canned. Both are so easy to grow and there is always space around the edge of the garden for enough roots to provide all you need. There is good money in growing asparagus and rhubarb for the fresh or canning market. More and more people are finding them a source of extra income, even with small plantings. Why not plant more of both this spring?

MacDonald Crimson The New Red Rhubarb

This new variety is the best of all. Yields heavily from spring right through to late summer because it never goes to seed. Will last for years. Produces unusually large attractive crimson stalks and the good thing is that they are very tender and juicy (skin and all); not tough or stringy as most large stalks are. If everyone knew this grand new red rhubarb no other kind would be planted. It is so much better in every way—large size, rich red color, greater production, and best of all a deliciously sweet flavor. Superior for canning—each piece pink, tender, not stringy, the syrup rich in color, and all a wonderfully mild flavor.

Ours are all strong division roots ready to produce quickly. Planted this spring they will make fine large stalks for your use this summer and fall and of course again in the usual early spring season. Excellent for winter forcing.

PRICES—Each 54c; 3 for \$1.50; 6 for \$2.75; 12 for \$5.30; 25 for \$9.25.

MYATT'S VICTORIA Early. Rhubarb is in greater demand every year at food stores everywhere. Victoria is the preferred market variety and is generally planted. Good for winter forcing, too, when prices are highest.

Attractive pink stalk, delicious, mild flavor. This pink stalk, tender variety is preferred and brings best prices. Our stock is carefully grown from guaranteed tested seed. Victoria is ideal for pies and sauce. Transplants easily; produces abundantly.

1-yr., $\frac{1}{2}$ to 1 Inch—Each 12c; 6 for 50c; 12 for 95c; 25 for \$1.45; 50 for \$2.70; 100 for \$4.45.

1-yr., 1 Inch and up—Each 18c; 6 for 75c; 12 for \$1.25; 25 for \$1.90; 50 for \$3.45; 100 for \$6.25.

VICTORIA CLUMPS

Large 2-year-olds, ready to produce this summer. Just the thing to get Rhubarb started quickly in your garden.

PRICES—Each 28c; 3 for 75c; 6 for \$1.25; 12 for \$2.25.

MacDonald Crimson

HORSERADISH



How many times have you wanted Horseradish roots or leaves for your canning and kitchen use! It is easy to grow and a few of these roots multiply rapidly and will make all you need. Plant in any out-of-the-way corner. A fresh, home grown supply is much better than what you buy. The cost is little and once started Horseradish lasts for years.

Prices: Big Crowns—3 for 39c; 6 for 62c; 12 for \$1.15; 25 for \$1.95.

Home Garden Planting

- | | |
|---|---------------------------|
| 50 Mary Washington Asparagus, 2 yr. No. 1 | All for
\$3.78 |
| 12 Victoria Rhubarb, 1 in. and up | |
| 3 New MacDonald Crimson Rhubarb | |
| 3 Horseradish | |

"Your Asparagus Bed"

- | | |
|--|-------------------------|
| Garden Fresh Asparagus is a real treat. Don't miss it. | 2 Year
No. 1 |
| 50 New Paradise | \$2.37 |
| 50 Mary Washington | |

& ASPARAGUS *For Profit*

REGULAR CROPS YEAR AFTER YEAR

Asparagus is easy to grow and you can make big profits from a small space. 50 to 150 plants will supply this delicious food for the family. A bed lasts for 10 to 15 years, and you can depend on heavy regular crops from our roots. It is most important that you get strong, healthy true-to-name plants. We grow them by the thousands from guaranteed tested seed on special soil to give you the best planting stock.

Mary Washington

Mary Washington

Improved variety developed and recommended by U. S. Dept. of Agriculture. Heavy yielding, pedigreed strain immune to rust; grows rapidly and produces uniformly tender shoots of excellent table quality; much larger, better flavored variety.

	12	25	50	100	200	300	400	1000
1-yr.—First grade...	\$0.60	\$0.85	\$1.35	\$2.15	\$3.75	\$5.25	\$6.55	13.50
2-yr.—First grade...	.75	.95	1.60	2.65	4.60	5.95	7.75	16.95

Mary Washington—Rust Proof

Now that canning companies have found how to can asparagus and retain all its delicious flavor and healthful food qualities they are contracting for greater supplies every year. At the same time there is a rapidly increasing demand from grocery stores and commission merchants for fresh asparagus during the summer season.

\$4,000.00 From 4 Acres

That is what one local grower made from his field of asparagus, and shows what can be done with the present day asparagus market. 5,000 roots plant an acre. In this section the cutting season is about two months, beginning in May before any other cash crop. One year plants are preferred by commercial growers.

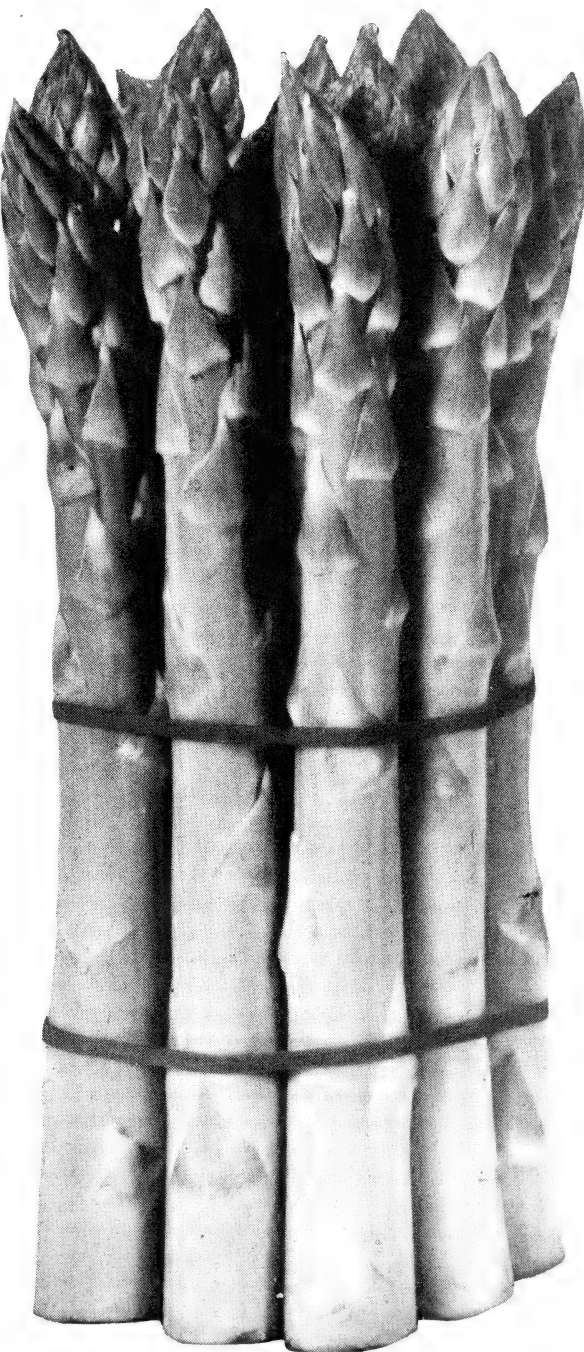
There is a steady demand with average prices of 5 to 8 cents per pound. You can make money growing asparagus now!

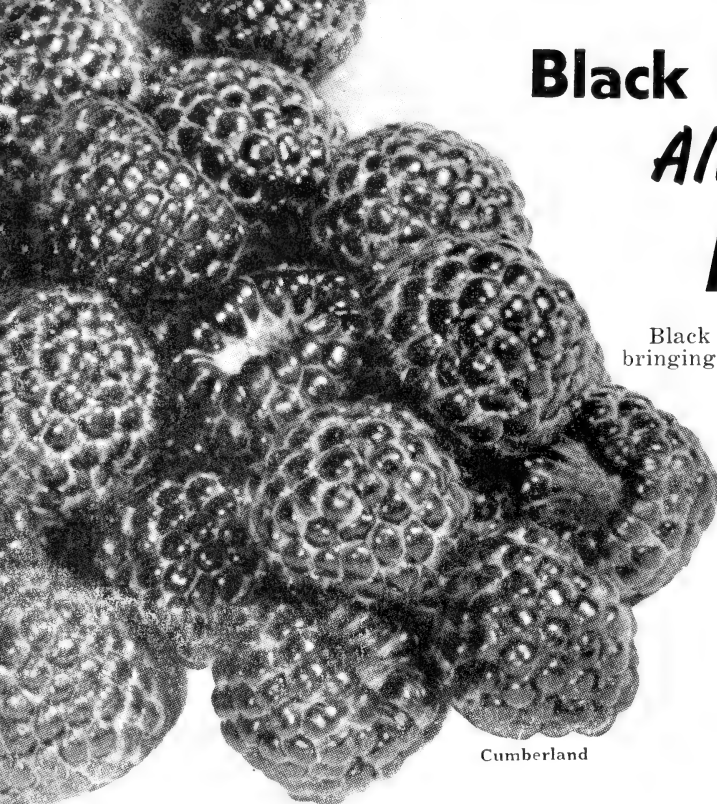
New! Paradise Asparagus

Bears a Big Crop in Only One Year

That tells the story of this remarkable new Asparagus. It comes into full production quickly—no need to wait 2 or 3 years to begin cutting. PARADISE was bred and developed to do just that. The rapidly increasing demand for both its plants and stalks as Paradise becomes more widely grown, shows that here is a popular asparagus variety. It is rust resistant and produces great, wonderful appearing stalks of delicious flavor. Paradise is a most promising asparagus for home use and profitable market sale. We are glad to offer this new, early producing, deliciously flavored variety at these low prices:—1-yr. No. 1 roots: 12 for 70c; 25 for 90c; 50 for \$1.50; 100 for \$2.40; 250 for \$4.90; 1000 for \$15.75.

2-yr. No. 1 roots: 12 for 85c; 25 for \$1.20; 50 for \$1.95; 100 for \$3.25; 200 for \$5.75; 300 for \$7.85; 400 for \$9.45.





Black Raspberries *Always Make* **MONEY**

Black Raspberries have regularly been bringing better than average returns every year. Fruit canneries always contract for a good part of the crop and this insures better prices all around. These are proven, profitable varieties. Michigan grown, double inspected raspberry plants are recognized throughout the country as the best. Our soil is especially adapted to produce sturdy, well rooted quick growing plants.

Cumberland

Cumberland Leading Commercial Variety

CUMBERLAND PRICES

1-Year No. 1

12 for	\$ 0.95
25 for	1.45
50 for	2.70
100 for	4.45
200 for	7.95
300 for	11.15
400 for	13.75
1000 for	32.50

Low Prices For Dependable Certified Plants

Clear money above all expense is what you want and you can depend on our heavy producing, vigorous plants for it. Cumberland is still the leading berry in the plantings of commercial fruit growers everywhere. Government Experiment stations have found none that promise to be a better money-maker.

If you grow Black Raspberries at all you need this great mid-season berry for a complete planting; it is hardy, healthy and produces its big paying crops of fine berries in every fruit growing section. Plants vigorous and very productive; thrive everywhere. Berries large, firm, jet black with a delicious flavor. Wonderful long distance shippers—attractive appearance—always command good prices. Guaranteed to please you and make big money.

Bears Heavily—Picks Easily—Makes Money



Strong Healthy Plants That Will Grow Fast and Make Money

This Victory Raspberry Garden

Will Grow Enough Fruit
to Eat and Can

- 25 Logan (Black)
- 25 Cumberland (Black)
- 25 Latham (Red)
- 25 Indian Summer
(everbearing)

Have fresh raspberries from early
Summer to Fall

100 Plants 1 Yr. **\$4.95**

THE NEW! MORRISON

Black Raspberry

Bigger, More Profitable—Late Berry

Here is a really better Black raspberry for both home and market use. Morrison has now been widely tested from Pennsylvania to Michigan, and has proven head and shoulders above other varieties in most every way. Commercial growers say: "Largest blackcap I have seen." "Practically disease free." "Larger and firmer than Cumberland. Does not crumble." "Holds its size to the last of the picking season." "For two years it has brought more than other varieties on the Pittsburgh market."

A county agent says: "The Morrison is somewhat the most attractive berry I have seen in several states. With us the berry ripens slightly later than Cumberland, is considerably larger, very dark and glossy and sells at a premium at all times."

The big bushes are exceptionally vigorous, hardy growers; long lived (some producing well after 12 years), and are practically disease free.

Morrison berries are high flavor, firm, juicy, not so seedy, and the size averages almost an inch across. They hold up longer in grocery and market, outyield other varieties and **MAKE MORE MONEY FOR THE GROWER!**

To sum up, Morrison is:

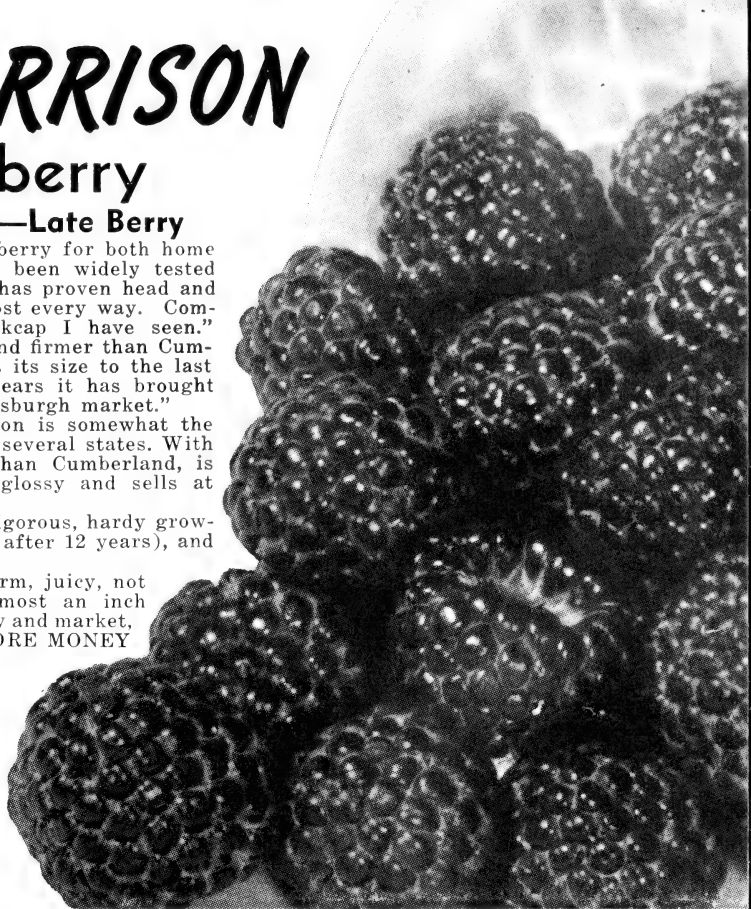
1. $\frac{1}{3}$ larger than any other blackcap.
2. As heavy a yielder as Cumberland.
3. Practically disease free.
4. Does not crumble—holds its size all season.
5. Makes more money because its large size and glossy color make so much better appearance.

MORRISON PRICES—1 yr. No. 1

3 for.....\$0.60	50 for..\$ 5.30
6 for..... 1.10	100 for.. 8.75
12 for..... 1.75	200 for.. 15.75
25 for..... 2.85	300 for.. 22.30

2 yr. Bearing Age

Each.....\$0.54	6 for.....\$2.75
3 for..... 1.45	12 for..... 4.95



SPECIAL INTRODUCTORY OFFER

6 New Thornless Boysenberry, 1 yr.
6 New Morrison Blackcap, 1 yr.

\$1.75

Early NEW LOGAN

Most Widely Planted
Early Blackcap

Ripens 6 to 9 Days Before
Cumberland

This is the early variety growers have been looking for. It has all the good points other early berries have lacked. Its berries are good size, do not crumble (unusually firm), do not hold a glossy black color and have a deliciously sweet flavor. Logan is a fine home garden berry. Bears heavily, maturing most of its crop before Cumberland begins, and so gets the best of the early high prices. Many

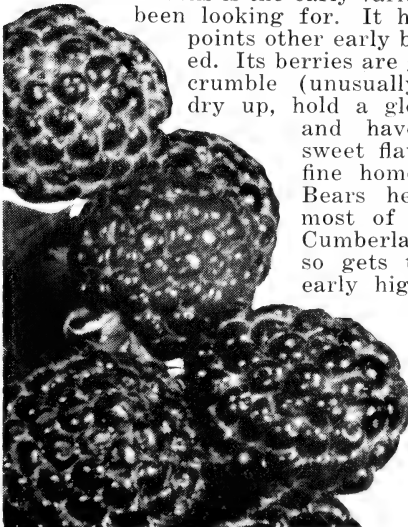
Michigan canning companies are contracting Logan because they like its rich flavor and uniform berries.

Logan is recommended Michigan and Ohio Experiment Stations. It has proven to be an entirely satisfactory commercial berry in the great fruit sections of these states. It is remarkably free from and resistant to disease; a strong grower, throwing out plenty of fruit canes.

We recommend Logan for its earliness, its excellent quality, its firmness and color for market. Plant Logan and you will be well repaid. Our price is low for this fine Early Raspberry.

NEW LOGAN PRICES—1 yr. No. 1

12 for.....\$0.95	200 for.....\$ 7.95
25 for..... 1.45	300 for..... 11.15
50 for..... 2.70	400 for..... 13.75
100 for..... 4.45	1000 for..... 32.50



Logan



Sodus

SODUS

THE BEST PURPLE RASPBERRY

A Coming Money-maker
Ripens Early

This New Early Purplecap
Promises Great Profits

If you have not eaten purple raspberries both fresh and canned, you have a delightful experience coming, for these berries have a color, aroma and flavor that call forth that "more" taste. They are something deliciously different.

This newcomer from the Expt. Station will be a money-maker because of its great size, attractive color, extra firmness and exceptionally heavy crops. Giant, bright purple berries, do not crumble, borne in great clusters on every branch. Flavor good—a blending of red and black raspberry.

SODUS is a rapid grower with great strong canes to carry its big load of fine fruit. So far it has shown almost complete freedom from mosaic; plant safely anywhere. Had no winter damage when others were frozen. Stands dry weather unusually well.

Sodus Has Size, Color and Quality

Sodus is the best of all purple sorts generally planted today; has proved both resistant to drought and hardy in winter cold. A good sized, fine flavored purple raspberry with attractive appearance will make money. SODUS is such a berry and deserves extensive planting for commercial use. At home, its tart flavor and great size are what everyone wants for canning and pies. Plant SODUS for a Really Good Purple Cap.

SODUS PRICES—1 yr. No. 1

12 for.....	\$ 1.15	100 for.....	\$ 5.95
25 for.....	1.95	200 for.....	10.90
50 for.....	3.45	300 for.....	15.55

HERE IS SOMETHING SPECIAL FOR YOUR FRUIT GARDEN

Giant Size Black Raspberry Plants

Ready To Bear A Crop This Summer!

Big, heavy rooted, well branched, well grown bushes—larger and better than any transplants we have seen in a long time. They were ready to produce a good crop for us this summer and will do the same for you. All Cumberland—the leading Blackcap.

We have only a limited supply of Special Size plants, so it is "first come, first served."

SPECIAL PRICES FOR THIS BIG VALUE

Each	45c	6 for.....	\$2.30
3 for.....	\$1.25	12 for.....	4.25



Better Rooted, Fully Branched
Ready-to-Bear

New Mammoth BOYSENBERRY

\$800 to \$1,500 Income Per Acre

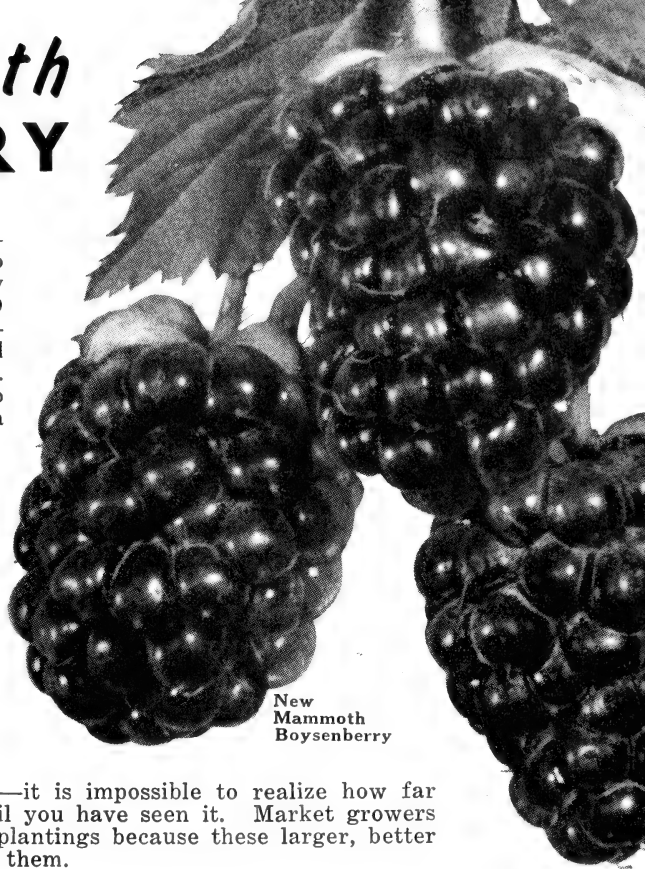
55 of the largest berries fill a quart basket. Average size, 1 inch diameter, 1½ to 2 inches long—largest bush or vine berry known. Bushes are hardy (has stood 19 degrees below zero). Its exceptionally rapid growth, heavy crops, immense size and deliciously different flavor will amaze you. Grows like a dewberry and is as easy to raise. Ripens with them and fruits over a longer season.

Fine for Jams, Jellies, Pies

Boysenberry is a cross of Blackberry, Raspberry and Loganberry. Berries dark reddish-purple, wine-colored, juicy with a high flavor not found in other bush fruit. Unbeaten for jellies, jams, pies. A dozen plants give you all you can use and some to sell.

Enormous Spicy Purple Berries

Boysenberry is a real money-maker because of its outstanding features of immense size, exceptional productiveness, unusual flavor and fine appearance—it is impossible to realize how far superior in all of these qualities it is until you have seen it. Market growers are greatly increasing their Boysenberry plantings because these larger, better berries are proving big money-makers for them.



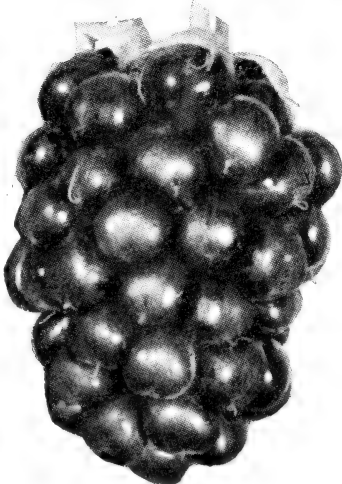
New
Mammoth
Boysenberry

BOYSENBERRY PRICES: (Regular)

	Each	3	6	12	25	50	100	250	500
1-yr., No. 1.....		\$0.65	\$0.95	\$1.45	\$2.15	\$3.95	\$6.95	\$16.25	\$31.00
2-yr., No. 1 Bearing Age \$0.45		1.20	2.20	3.90					

NOW! Thornless Boysenberries

Pick
With
Pleasure



Ripens 10 Days
to 2 Weeks Earlier

Think of the pleasure of picking a berry with all these advantages and entirely free from thorns, too. That is what you have with the new Thornless strain. The only difference we can see is that the berries are slightly smaller than the regular Boysenberry. Thornless brings you ripe fruit about two weeks earlier, too. Easy to grow and quick to bear a big crop, with beautiful berries decidedly different in flavor—you just cannot beat these "pleasant-to-pick" Thornless Boysenberries!

THORNLESS PRICES

1-yr., No. 1—Each 30c; 3 for 75c; 6 for \$1.15; 12 for \$2.10; 25 for \$3.75; 50 for \$5.95; 100 for \$10.95.

BOYSENBERRY SPECIAL COLLECTION

25 Boysenberry 1 yr.
(Thorny)

3 Boysenberry 1 yr.
(Thornless)

3 Iceberg White Blackberry
FREE

ONLY

\$2³⁵

BIG Transplants

Bearing Age Bushes

Will give you some berries this Summer and a good picking the next Summer. We have bearing size plants in Regular Boysenberry only.

RED RASPBERRIES

Latham

Most Profitable
Late Red

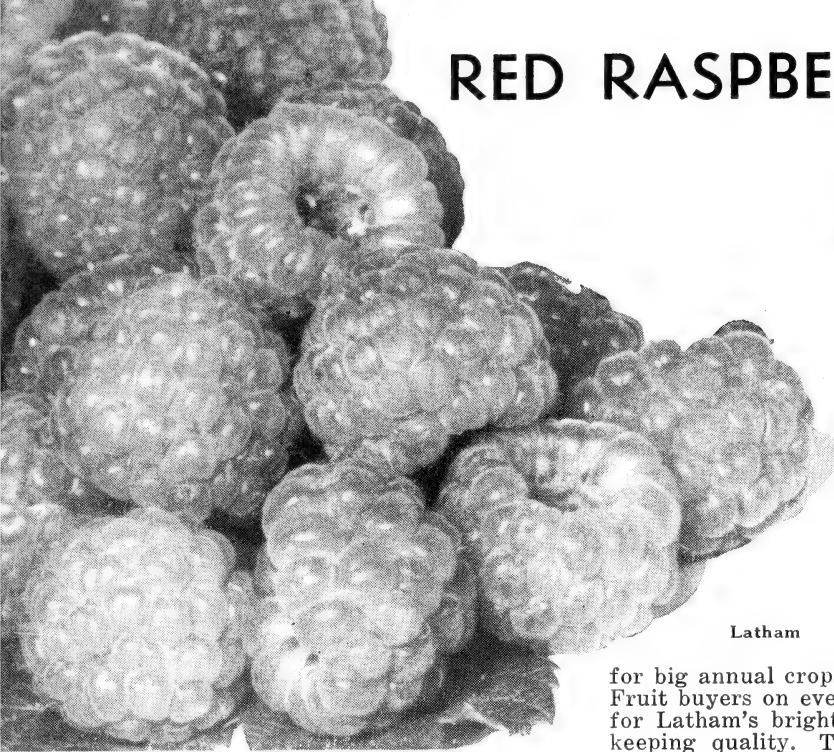
Latham has definitely proved to be the best red raspberry money-maker in every fruit section of the country. Each year for the past five years we sold more Latham plants than all other red varieties put together.

For general planting in all sections, Latham is the best because this hardy, vigorous grower can be depended upon

for big annual crops of finest looking berries. Fruit buyers on every market pay a premium for Latham's bright color, firmness and long keeping quality. These things and its most delicious flavor make it equally desirable for home gardens.

Hardy, Productive, Dependable

Hardy and very productive—far out-yielding older kinds, it ripens from mid-season to late. We wish we could convince you what a truly fine berry LATHAM is in every way. If you have grown it you already know. Berries are all above average size, bright red, and make the most attractive appearance of any red variety; the flavor is of the finest. You will make no mistake in planting all you can.



Latham

Latham Is Still the Best Fruit
Everywhere for Profit

FOR CANNING—Jams and Jellies—Unusually rich color that does not fade, and what a wonderfully delicious, true, fresh raspberry flavor! The ideal berry for canning uses.

GOVERNMENT EXPERIMENT STATIONS—Recent reports from leading fruit states say that Latham is the best and most profitable berry for its season and highly recommend it for planting.

Guaranteed, True-to-name, Disease-free, Genuine LATHAM. You cannot afford to plant any but the best.

	12	25	50	100	200	300
1 yr. No. 1 Plants.....	\$1.45	\$2.15	\$3.95	\$6.95	\$12.45	\$17.95
1 yr. No. 2 Plants.....		1.80	3.15	5.25	9.45	13.75
2 yr. Bearing Age.....	1.95	2.95	5.15	9.40	17.25	23.35

Marcy

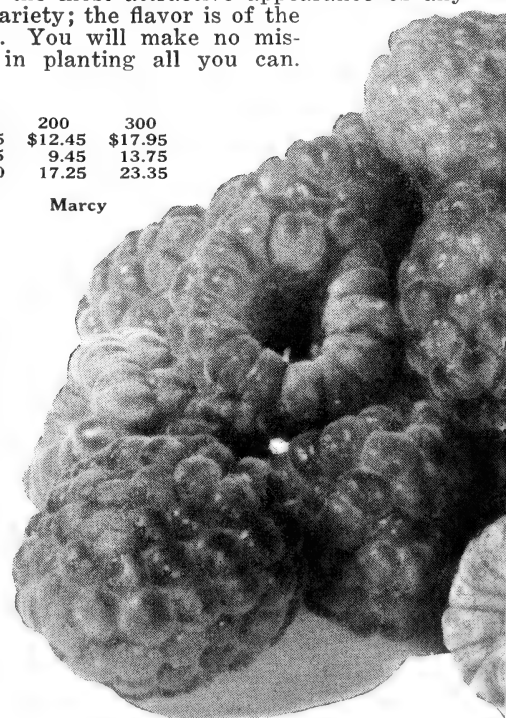
New Worthwhile
Midseason Red

Marcy is the largest red raspberry fruited at the N. Y. Expt. Station in recent years. More than this it has been grown satisfactorily for general production and is proving one of the best mid-season varieties. Ripens just before Latham and its great, long pointed berries and bright glossy color make for above average prices. Mild, sweet, good quality flavor better than Latham but not quite equal to Taylor.

Bushes are tall, very vigorous and upright growing, needing no support and making picking easy. Disease resistant to a remarkable degree; hardy in cold winters. The crop is very heavy. Marcy is recommended as a worthwhile, better red raspberry for home gardens and commercial plantings.

	12	25	50	100
1 yr. No. 1 Plants.....	\$1.65	\$2.75	\$4.95	\$8.45
2 yr. Bearing Age.....	1.95	3.15	5.25	9.95

Marcy



THE
NEW

SUNRISE

**Extra Early—Extra Quality
Extra Hardy**

SUNRISE comes to you fully tested and proven as a better flavored, better quality berry for home use and an earlier ripening, hardier growing, more profitable variety for market. Here is its story—judge for yourself.

1. **Originated by U. S. Dept. of Agri.** in 1923; carefully tested by them since and they say—“Of **most importance** from the **standpoint** of the **practical grower** perhaps, are the **hardiness** and **resistance** to disease of the plants, the **earliness** and **larger size of berry** as compared with St. Regis and the **better texture and quality** as compared with Latham.”
2. **Earliness**—N. J. Expt. Station says: “The special value of SUNRISE is its earliness. This year it was ready for first picking June 8, Chief on June 19, Latham, June 23.”
3. **Long Picking Season**—N. J. Expt. Station says: “In most cases SUNRISE will continue to produce some fruit even after Latham is practically finished.”
4. **Hardiness**—U. S. D. A. says: “SUNRISE has shown resistance to low temperatures in mid winter at New Jersey with practically no injury, whereas Latham and some other varieties were severely injured.” It has been more resistant to anthracnose, leaf spot and spur blight than Latham.
5. **Flavor and Quality**—U. S. D. A. says: “More attractive than Latham—color is bright, turns dark red on ripening, berries pick easily. They are firm, fine textured, juicy, non-crumby, mild in flavor, better quality.”



Sunrise

From these statements you can see what a superior variety in every way SUNRISE is. Don't wait longer to make a planting of this new U. S. D. A. berry.

SUNRISE PRICES—1 yr. No. 1

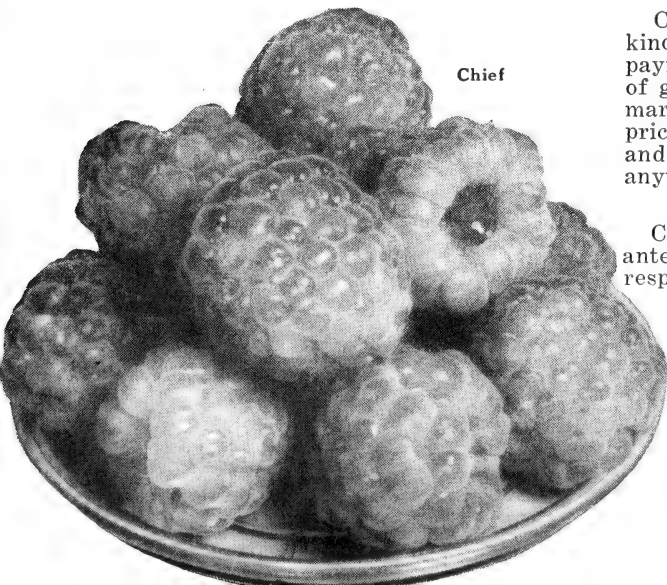
12 for.....	\$1.65	100 for.....	\$ 8.45
25 for.....	2.75	200 for.....	14.95
50 for.....	4.95	300 for.....	21.25

2 yr. Bearing Age

12 for.....	\$1.95	50 for.....	\$5.25
25 for.....	3.15	100 for.....	9.95

Chief

The Best Early Red Raspberry
for Home or Market



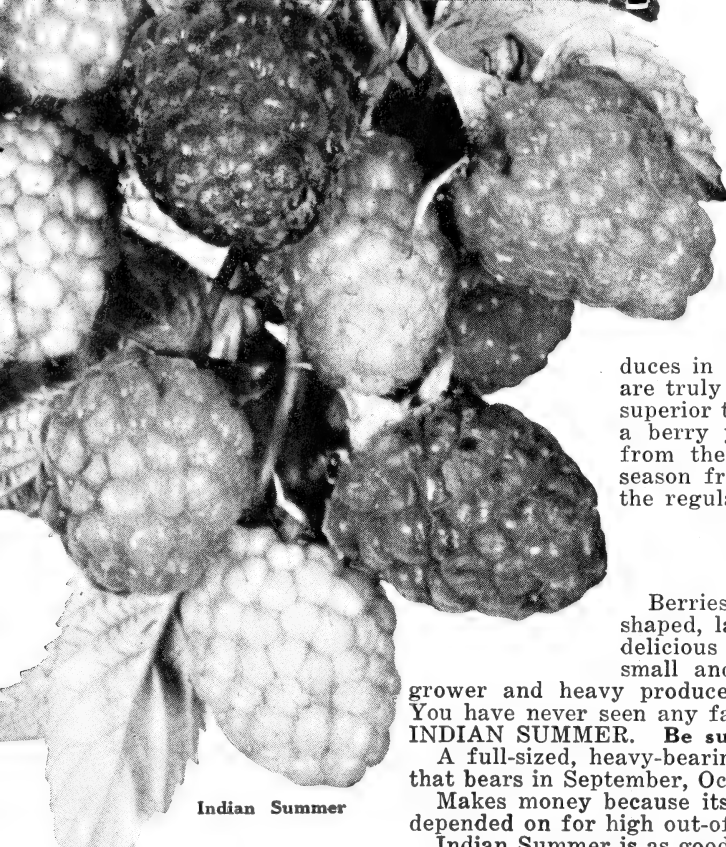
Chief

Chief is replacing King and other early kinds because it is better. Early Chief is paying Michigan growers well. Berries are of good size and color, firm, and reach the market in good shape for early-season high prices. Perfectly hardy, a vigorous grower and heavy producer—Chief will make good anywhere.

Chief plants received from us are guaranteed true-to-name and No. 1 in every respect. Early red raspberries always pay well and with Chief you can depend on some extra profits. We think a lot of Chief and we recommend it to you as a money-making early red raspberry.

CHIEF PRICES 1 yr. No. 1

12 for.....	\$1.45	100 for.....	\$ 6.95
25 for.....	2.15	200 for.....	12.45
50 for.....	3.95	300 for.....	17.95



Indian Summer

INDIAN SUMMER

New Everbearing Red Raspberry

Here is a distinctly new type of everbearer, unlike any older kind. "Marvelous" justly describes Indian Summer. The quantity, size and quality of the berries it produces in September, October and November are truly marvelous because they are so far superior to any other everbearer. With such a berry you can make worth-while profits from the high prices always paid for off-season fruit. You get a good early crop in the regular season, too.

We Recommend This New Everbearer

Berries are uniform, rich red, thimble-shaped, large and juicy; flavor a true, tart, delicious raspberry. St. Regis berries are small and poor by comparison. A thrifty grower and heavy producer. Another N. Y. Station berry. You have never seen any fall berries as good in every way as **INDIAN SUMMER. Be sure to plant this spring.**

A full-sized, heavy-bearing, fine quality, real red raspberry that bears in September, October and November.

Makes money because its big fall crop of fine fruit can be depended on for high out-of-season prices.

Indian Summer is as good a fall bearing raspberry as Mastodon is an everbearing strawberry—and that is saying a lot.

Taylor GIANT-SIZE BETTER LATE BERRY

This new variety has every quality needed to make it a perfect berry. Berries larger than any other, except Newburgh, uniform and pointed in shape, very firm (will not crumble when picking) bright snappy red color—all qualities that make TAYLOR an ideal shipper, arriving in best appearance to bring highest prices. Its large size holds up well over a very long season. Its deliciously sweet flavor and thick juicy flesh make it just right for eating, canning and preserving at home.

Outstanding in Every Good Quality

An unusually upright strong-caned grower, makes picking easy and keeps the fruit well off the ground. Exceptionally hardy under severe weather conditions. Crops unusually heavy. Originated by New York Expt. Station; best of its recent new kinds. **TAYLOR** is really fine.

INDIAN SUMMER PRICES			
	1 yr. No. 1 Plants	2 yr. Bearing Age	
12 for.....	\$ 1.60		\$ 1.95
25 for.....	2.50		3.15
50 for.....	4.65		5.25
100 for.....	7.95		9.95
200 for.....	14.10		
300 for.....	20.15		
400 for.....	25.55		

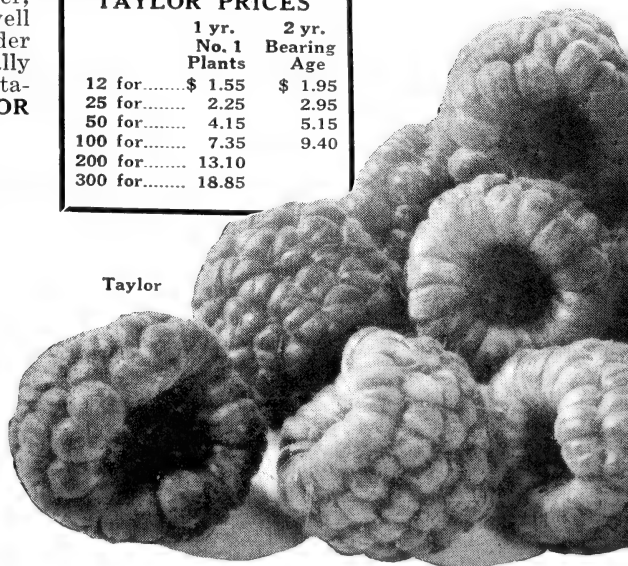
TAYLOR PRICES			
	1 yr. No. 1 Plants	2 yr. Bearing Age	
12 for.....	\$ 1.55		\$ 1.95
25 for.....	2.25		2.95
50 for.....	4.15		5.15
100 for.....	7.35		9.40
200 for.....	13.10		
300 for.....	18.85		

Golden Queen Yellow Raspberry

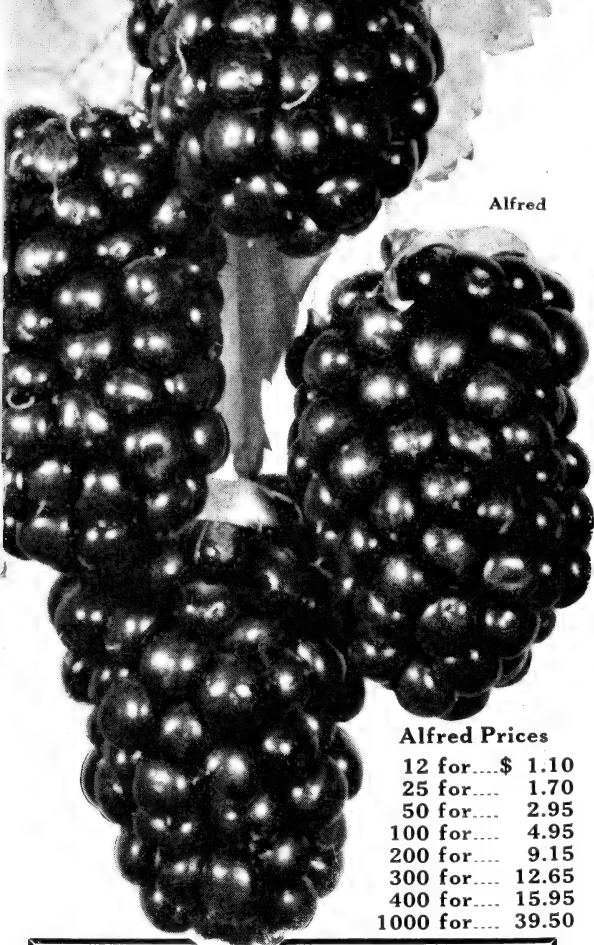
Think of great, golden-yellow "red" raspberries of sugary sweetness—that's Golden Queen. There is nothing finer for table and canning than this heavy bearing, unusual and beautiful fruit. Canes are thrifty, hardy and almost free of thorns. (NOTE—the 2 year Transplants will begin bearing this year.)

PRICE: 1 yr. No. 1, each 25c; 3 for 60c; 6 for 95c; 12 for \$1.65; 25 for \$2.75; 50 for \$4.95; 100 for \$8.45.

2 yr. No. 1 Trans., each 40c; 3 for 95c; 6 for \$1.50; 12 for \$2.45; 25 for \$4.15; 50 for \$7.50; 100 for \$13.95.



Taylor



Alfred

Dollar Making BLACKBERRIES

Did you ever see finer looking berries than those shown here? Blackberries are more popular than ever, but you must grow the right varieties and get the best quality of plants to secure the maximum profits. Alfred and Eldorado are the best grown today and will produce the crops you expect. Blackberries have paid mighty well and now is a good time to plant more.

Early Alfred

Alfred is best for every use. It has been grown by leading fruit growers and proven the **Best Early Blackberry** variety. We unreservedly recommend it to our customers as thoroughly satisfactory and the equal of any blackberry early or late when it comes to producing big crops and paying worth-while profits. Think of a bush full of tremendously big blackberries from 1½ to 1¾ inches long, practically free from seeds, coreless and with a thick pulp fairly bursting with delicious juice. That's Alfred!

Paying Crops of Big, Juicy, Delicious Berries

Alfred ripens a full 10 days ahead of Eldorado and continues all through the Eldorado season. Alfred berries are bigger, brighter colored, of better flavor and bring better prices right along. Once you grow Alfred you won't be satisfied with any other berry—fine, large berries that carry well to market.

The plant is such a vigorous, healthy grower that it produces a good crop the first year after planting. Withstands cold that kills less hardy varieties.

Alfred will please you—whether raised for pleasure or profit. It is another of our splendid varieties—selected for its worth. Alfred plants are still scarce, but we are making a price within the reach of all, because everyone should have this wonderfully fine berry.

2 YR. BEARING AGE BUSHES

PRICES—Alfred only: 12 for \$1.35; 25 for \$2.05; 50 for \$3.65; 100 for \$6.50; 200 for \$11.55.

Alfred Prices

12 for....	\$ 1.10
25 for....	1.70
50 for....	2.95
100 for....	4.95
200 for....	9.15
300 for....	12.65
400 for....	15.95
1000 for....	39.50

ELDORADO BLACKBERRY

Satisfactory Everywhere—Always Dependable

Every good quality possessed by other blackberries is emphasized in ELDORADO. Its exclusive advantages are: Absolute freedom from Orange Rust; a very heavy bearer with great, jet black berries.

Plants are so strong and vigorous they survive severest Northern Winter without mulching; Eldorado will produce paying crops in climates and locations where less hardy kinds will be frozen. A splendid shipper, because the berries are so firm. Plant Eldorado generously. They are making big money for other growers and will do the same for you.

ELDORADO PRICES

12 for.....	\$ 1.00	200 for.....	\$ 8.75
25 for.....	1.60	300 for.....	12.15
50 for.....	2.80	400 for.....	15.20
100 for.....	4.75	1000 for.....	37.50

LUCRETIA DEWBERRY

Dewberries are in favor because they are profitable and because they are delicious for home use. Market price averages 20 per cent more than blackberries. Ripen a week to ten days before the earliest ordinary blackberries. Lucretia is especially productive in light soils.

LUCRETIA PRICES

12 for.....	\$ 0.90	200 for.....	\$ 7.15
25 for.....	1.35	300 for.....	10.25
50 for.....	2.60	400 for.....	12.25
100 for.....	4.25	1000 for.....	27.50

ICEBERG White Blackberry

This is a really worthwhile blackberry. When fully ripe the berries are creamy white and of good sweet flavor. Easy to grow as any blackberry and produces plenty of its novel white berries. Put a few plants in the garden and surprise the neighbors.

Prices: 1 yr. No. 1—Each 15c; 3 for 35c; 6 for 60c; 12 for 95c; 25 for \$1.85.

2-yr. Bearing Age—Each 25c; 3 for 70c; 6 for 95c; 12 for \$1.75.

Don't Miss This Worthwhile Novelty



Jonathan

Red
Delicious

APPLE TREE PRICES

Experienced fruit growers recommend 9/16 in.,
4 to 5 ft. trees as best size to plant.
(All Varieties on this page.)

	Each	3	10	25	100
2-yr., 9/16 in., 4-5 ft.....	\$0.90	\$2.55	\$7.50	\$17.50	\$62.50

JONATHAN—LATE FALL. Sold in every store. Glossy red; fine grained, juicy flesh, excellent flavor. Medium to large size. Unusual keeper (to February) makes it a most profitable commercial apple. Quick to bear and easily grown in practically every fruit section. Jonathan is first choice in many homes.

RED ASTRACHAN—BEST EARLY SUMMER. Well known old sort. Large round, crimson apple; rich juicy, excellent eating and cooking early apple, vigorous and productive tree.

STAYMAN'S WINESAP—LATE WINTER. Best Winesap. Extra large, bright red, crisp, juicy with a wonderful zesty flavor. Stayman easily leads all other Winesaps. Heavy bearers and big money-makers everywhere.

WEALTHY—FALL. Heavy yearly bearer. Hardy, long lived. Attractive, brilliant, red striped; superior quality, wine-like flavor. An all-round apple for eating, cooking, cider and market.

Plant More APPLES

*And Have Plenty of
Fruit for a Lifetime*

Ours are guaranteed true-to-name, well rooted, quick-growing trees. These are high-quality, proven value varieties, best adapted to eastern, middle-western and northern soils and climates. There is real pleasure and a big saving in having two or three trees of each fruit right in your garden. As a commercial proposition, tree fruit is always in profitable demand.

BALDWIN—WINTER. This widely known variety averages about medium size, rich dark red, juicy, fine flavor. Good for market and home use. One of the first two or three varieties in the great Michigan and New York apple sections.

CORTLAND—WINTER. Many customers have asked us for this newer apple and we are glad to supply them. Cortland is an excellent, early bearing, long keeping McIntosh type. Large fruit streaked with bright red and yellow. One of the best commercial sorts.

DELICIOUS—(DOUBLE RED). Winter. Known world over. Brilliant dark red, shading to yellow at blossom end. Large to very large; white tender juicy flesh. Wonderfully rich sub-acid flavor—truly delicious. Ships without bruising, makes a wonderful appearance, commanding top prices. Comes into bearing early.

YELLOW DELICIOUS—LATE FALL. This beautiful new apple has the distinctive shape and big size of Red Delicious with an added deliciousness and mildness of flavor that is unsurpassed by any apple. Flesh solid, crisp and full of juice; its rich golden-yellow, firm smooth skin gives it a luscious appearance. This new, highest quality apple is always in demand and brings top prices. Plant it now.

GRIMES GOLDEN—WINTER. Favorite mild eating apple. Excellent keeper, uniform shape, typical dull gold color. Hardy productive tree. Carefully selected and grafted trees insure satisfaction with this fine apple.

McINTOSH—WINTER. A MONEY-MAKER TODAY. Juicy snow apple—white, crisp flesh; beautiful solid crimson color. Excellent quality—winelike, true apple flavor. Good annual bearer. Rapidly increasing popularity among consumers everywhere makes good prices certain. One of the most profitable apples.

NORTHERN SPY—WINTER. The old, well-known favorite. Delicious juicy flavor; excellent for eating and cooking. Brilliant streaked red color. Always in demand; good prices; long keeper.

YELLOW TRANSPARENT—EARLY FALL. Has proven both popular and profitable. Fruit large yellow with crisp sub-acid flavor. Heavy annual bearer; well known everywhere.

Three New APPLES

Outstanding Quality

DOLGO CRAB—Striking, Dazzling Red, New Crabapple. Unbelievable heavy bearer; free from blight. Jells quickly even when fully ripe. Good to eat fresh. Beautiful hardy trees, thrives everywhere. Called the "Perfect Crab." Dolgo is replacing older varieties. Its lustrous green leaves and mass of pink blossoms make it ideal for lawn planting.

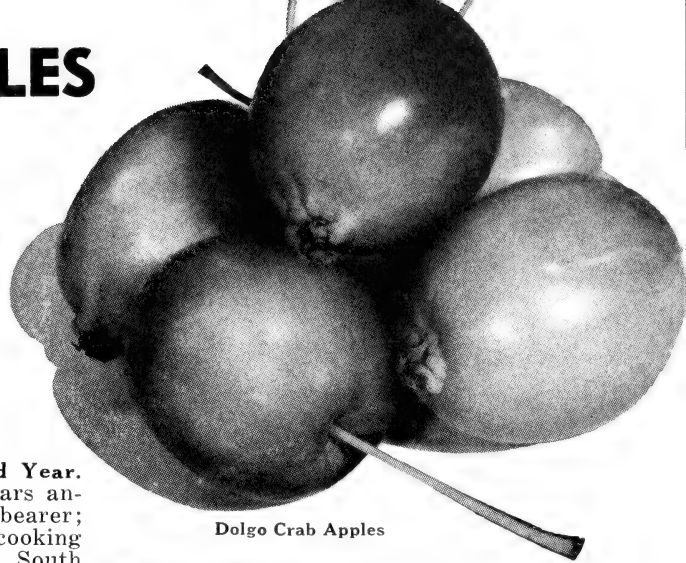
PRICE: 9/16 in., Each, \$1.00; 3 for \$2.85; 10 for \$8.75.

ANOKA—Have Apples the Second Year. Bears on one year old growth and bears annually. Ripens in August; very heavy bearer; fruit red stripes over yellow; fine cooking quality, short keeper. Originated in South Dakota, perfectly hardy. Does best in central and northern sections.

PRICE: 9/16 in., Each, \$1.00; 3 for \$2.85; 10 for \$8.75.

BEACON—All-Red Early Eating Apple. Originated at Minnesota State Farm; exceptionally hardy. Superior among early apples for its uniform good size, bright solid red color, excellent flavor, good keeping (a month after picking) and cooking qualities. Ripens about with Duchess and often sells for twice as much.

PRICE: 9/16 in., Each, \$1.00; 3 for \$2.85; 10 for \$8.75.

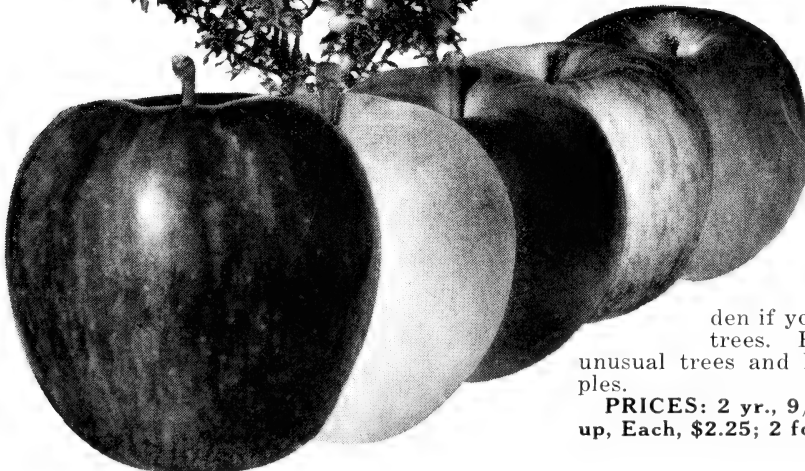


Dolgo Crab Apples

RED JUNE—An Old Favorite

Extra early summer apple ripening in July. Color deep red over yellow, fine flavored, tender and juicy, this medium size, round red apple is one of the best summer kinds. Tree is moderate size and generally reliable bearer of good crops. Firm, crisp flesh keeps well to early winter. Profitable summer market variety.

PRICE: 9/16 in., Each 90c; 3 for \$2.55; 10 for \$7.50.



HOME GARDEN APPLE COLLECTION

- 1 Red Astrachan—Summer.
- 1 Yellow Transparent—Early fall.
- 1 Jonathan—Late fall.
- 1 Red Delicious—Late fall.
- 1 Northern Spy—Winter.

All 5 for \$3.83 10 for \$6.94

Quintuplet Apple

5 Kinds of Apples on One Tree!

This one tree gives you delicious apples from early season to late winter. Five fine varieties are budded on one tree, selected to cover the apple season from late summer through fall and winter varieties.

Just right for your garden if you don't have room for five trees. Plant one or two of these unusual trees and have five varieties of apples.

PRICES: 2 yr., 9/16 to 11/16 in., 5 ft. and up, Each, \$2.25; 2 for \$4.25; 3 for \$5.85.

Famous PEACHES Hale Haven

MID-AUGUST. Wonderful new peach with great size and beautiful color of J. H. Hale and earliness of South Haven. A better peach of richest flavor; yellow flesh firm and juicy. Better shipper than South Haven; always freestone; bears every year. Hale Haven is one of the best and its sale shows a far greater increase than any other kind. Always brings more money. Ripens 10 to 15 days before Elberta and is second only to that grand variety in popularity and profits.

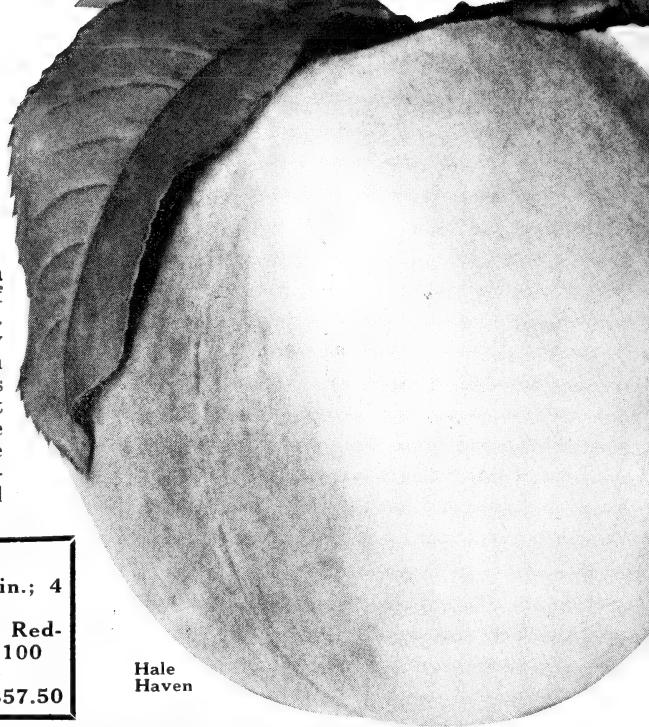
PEACH TREE PRICES

Experienced growers recommend 9/16 in.; 4 to 5 foot trees as best size to plant.

(All Varieties Except Kalhaven and Redhaven) Each 3 10 25 100

1 yr. 9/16 in.,

4 to 5 feet \$.75 \$2.15 \$6.50 \$15.00 \$57.50



Hale
Haven

ELBERTA—SEPTEMBER 1, PLANTED BY THOUSANDS. Standard commercial peach. Plant Elberta and be sure of a crop. Large to extra large. Freestone. Golden yellow flesh, red at the pit, firm, juicy. Has no equal as a prolific bearer and shipper. Best known peach.

J. H. HALE—LATE AUGUST. FIRST IN SIZE, COLOR, QUALITY. Yellow, thick skin, colors to a rosy tint. Deep yellow, fine grained very firm flesh—delicious flavor. A beautiful peach, fresh or canned. In size, color and quality, no peach compares with Hale. Always brings \$1.00 to \$1.50 more per bushel.

CHAMPION—EARLY AUGUST. BEST WHITE FREESTONE. Many prefer this white peach. Full of rich juice, finest flavor. Large red cheek. Heavy bearer; very hardy.

SOUTH HAVEN—AUGUST, THE PROFITABLE EARLY PEACH. Originated in the famous Michigan Peach Belt, South Haven, has proven one of the best varieties in every peach growing section. Experiment Stations recommend it when an earlier peach than Elberta is desired. Withstands severe winter cold. As fine a peach as the standard Elberta, firm, highly colored—and ripens 12 to 18 days earlier.

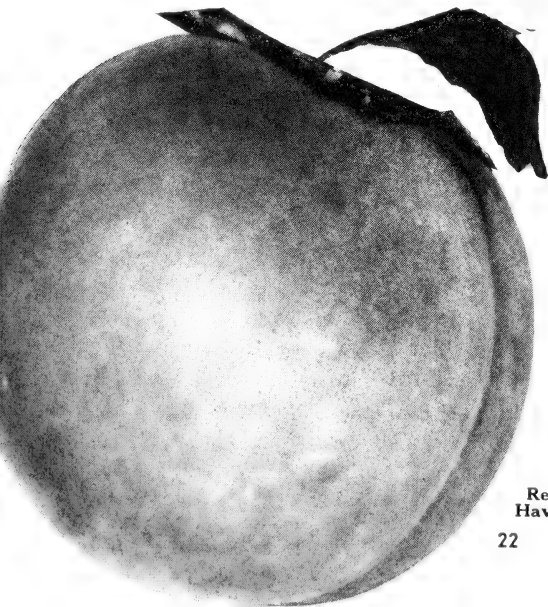
KALHAVEN—Ripening about a week before Elberta and a week after Hale Haven. It is a cross of J. H. Hale and Kalamazoo. Large, rich red-yellow color, and fine flavor. Heavy producer; exceptional hardiness for cold winters. Shipping quality is excellent. It is an all around superior peach that is being more heavily planted each year.

PRICES: 9/16 in., 4 to 5 ft., Each 80c; 3 for \$2.30; 10 for \$6.95.

NEW-REDHAVEN—30 DAYS EARLIER THAN ELBERTA. With the perfection of Redhaven in 1940 (a cross of Hale Haven and Kalhaven), Mr. Stanley Johnston of South Haven, Mich., Expt. Station has completed a remarkable series of new peaches.—Kalhaven (1936) ripening about 4 days before Elberta, Hale Haven (1932) about 17 days before, and now Redhaven (1940) about 30 days earlier. All are outstanding in commercial shipping qualities—good size, color, firmness, dependable crops. All are equally excellent for home use because of size, fine flavor, yellow flesh, freestone pit.

Redhaven, the reddest of all three, usually completely covered with brilliant red. Medium size, firm, fine grained, sweet fruit. Trees are strong, healthy growers; very heavy producers—thinning often needed. Fruit buds hardier than Elberta, nearly as hardy as South Haven. You should have Redhaven for a fine extra early peach.

PRICE: 9/16 in., 4 to 5 ft., Each \$1.00; 3 for \$2.90; 10 for \$8.95.



Red
Haven



New Hardee

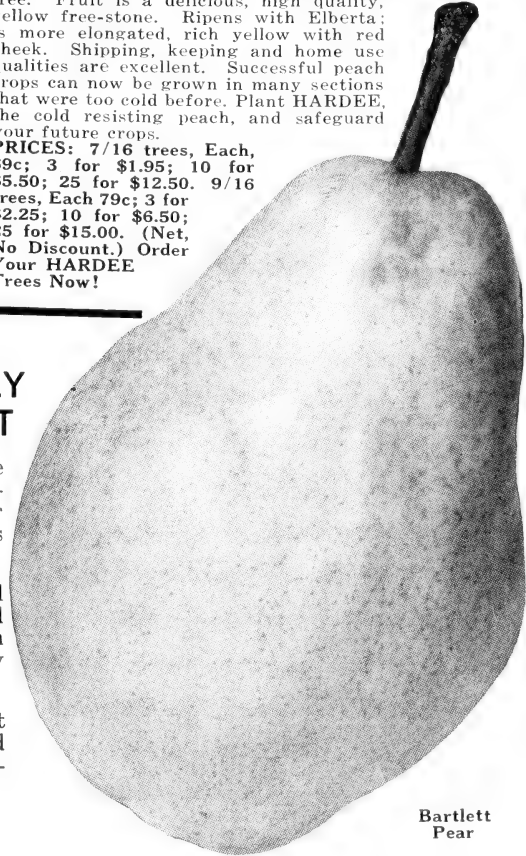
New HARDEE

U. S. Plant Patent No. 120
THE HARTIEST PEACH

Produces Full Crop After 18 Degrees
Below Zero

This record is reported by Ohio Experiment Station. It means sure crops when even Elberta fails, and that means soaring peach prices. HARDEE is a drought-resisting, steady bearing, sure-cropping tree. Fruit is a delicious, high quality, yellow free-stone. Ripens with Elberta; is more elongated, rich yellow with red cheek. Shipping, keeping and home use qualities are excellent. Successful peach crops can now be grown in many sections that were too cold before. Plant HARDEE, the cold resisting peach, and safeguard your future crops.

PRICES: 7/16 trees, Each, 69c; 3 for \$1.95; 10 for \$5.50; 25 for \$12.50. 9/16 trees, Each 79c; 3 for \$2.25; 10 for \$6.50; 25 for \$15.00. (Net, No Discount.) Order Your HARDEE Trees Now!



Bartlett Pear

Pears THE WORLD'S MOST DELICATELY FLAVORED FRUIT

BARTLETT—SUMMER. Known for quality. One of the best known and popular varieties for both commercial and home orchard planting. Golden color with red streak, mellow and indescribably delicious both fresh and canned. Heavy bearer.

KIEFFER—FALL. Best pear for large commercial planting, because of its sure crop, heavy yield and excellent shipping qualities. Kieffer has been proven unexcelled for commercial canning. A local cannery used over 200,000 bushels in one season.

SECKEL—EARLY FALL. A medium size pear that ripens late in September. Extremely fine quality and flavor. Always in market demand and equally valuable for home use.

Pear Tree Prices

	Each	3	10	25
2-yr., 9/16 in., 4 to 5 ft....	\$1.00	\$2.85	\$8.75	\$21.25

HARDY PLUMS

BURBANK—DELICIOUS TABLE Plum. Hardy Japanese variety free from black knot. Deep red color, unusually delicious flavor. Keeps three weeks after ripening. Ripens August 15 to Sept. 1.

STANLEY PRUNE—Recommended by New York Expt. Station as the best new early plum—early August, 10 days before German Prune. Stanley is the finest prune type plum; fruit largest size, dark bluish purple, freestone, fine grained, tender, juicy and sweet. Firm and does not crack. Excellent quality for cooking or eating. Produces heavy full crop every year; often bears in 3 years. **PLUM PRICES—**2 yr., 9/16 in., 4 to 5 ft.—Each \$1.45; 3 for \$4.10; 6 for \$7.95; 10 for \$12.75.

Dwarf Pear Trees

At Reasonable Prices

Dwarf pear trees are highly prized for the small garden where space is limited. They make plenty of fruit possible as these sturdy little trees bear a big crop way out of proportion to their size. Dwarf trees are well suited for ornamental planting too, and their fine, fresh fruit is always a pleasure.

Full Size Fruit from Dwarf Size Trees

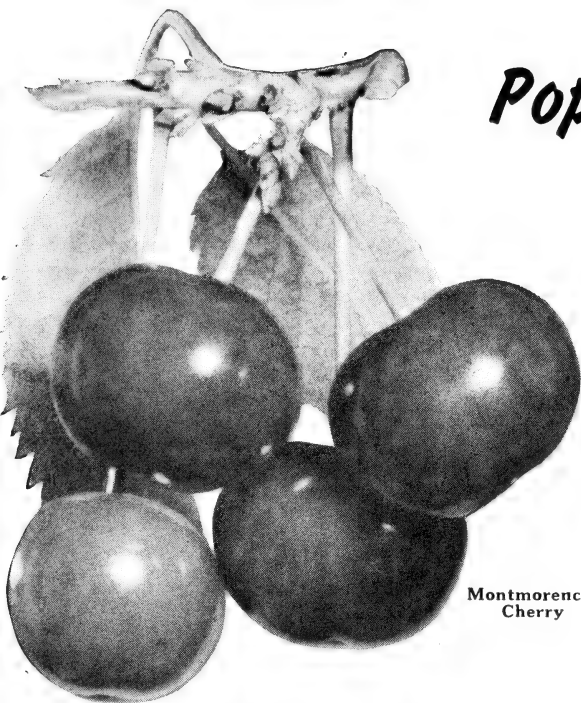
Well branched, well rooted, 2 to 3 foot, 2-year trees ready to make quick growth and good crops of full size fruit. Plant about 10 feet apart.

Bartlett Pear—Favorite summer pear.

Seckel Pear—Early fall sugar pear.

PRICES: Each \$1.25; 2 for \$2.40; 3 for \$3.50.

GERMAN PRUNE—BEST for Canning and Preserving. Medium size dark purple plum. Firm, sweet, the favorite everywhere for canning. Tree easy to grow, remarkably free from disease, very productive. Good keeper, excellent shipper. Ripens in September.



Montmorency
Cherry

Popular and Reliable Cherries

SOUR CHERRIES

EARLY RICHMOND—One of the most popular sour cherries, unexcelled for cooking. Dark red, tart, and juicy. Hardy trees uninjured by cold. Big crops.

MONTMORENCY—Ripens late in June and is best sour cherry for market. Makes delicious pies; fine for canning. Fruit larger than Richmond; bright red, acid flavor.

Grow Montmorency for the Canning
Factory Market

SWEET CHERRIES

BLACK TARTARIAN—Extensively planted and prolific. Regular bearer of big, black juicy, sweet fruit. Hardy, vigorous. Best and most profitable black sweet cherry—for market and home.

NAPOLEON-YELLOW—Old-time favorite, succeeds practically everywhere. Heavy bearer of large light yellow heart-shaped fruit.

SCHMIDT'S BIGARREAU—Newer sort. Unusually hardy. One of the best late sorts, especially in Northern sections. Largest size, firm fruit; deep red to mahogany. Brings best prices.

WINDSOR—Liver colored large cherry, wonderful flavor. Originated at Windsor, Canada. Hardy prolific tree. Valuable for market or family use.

QUINCE

ORANGE—Best of All Quince. Regular annual bearer of fine, large, rich yellow, aromatic fruit. Makes delicious jam and quince "honey". Trees hardy in most all sections. Begin bearing very young and produce large crops. On the market, quinces always bring extra good prices. An Orange Quince tree completes the fruit garden.

Price: 2 yr. 7/16 in., 3-4 ft., Each \$1.25;
2 for \$2.40; 3 for \$3.50; 6 for \$6.75.

Hansen Bush Cherry (See Page 28)

Fruit as delicious as sweet cherries; makes excellent Jell and Jam.

Cherry Tree Prices

	Each	3	10	25
Sour Cherry 2 yr., 9/16 in., 4 to 5 ft.....	\$1.25	\$3.50	\$11.00	\$24.95
Sweet Cherry 2 yr., 9/16 in., 4 to 5 ft.....	1.45	4.10	13.00	29.95

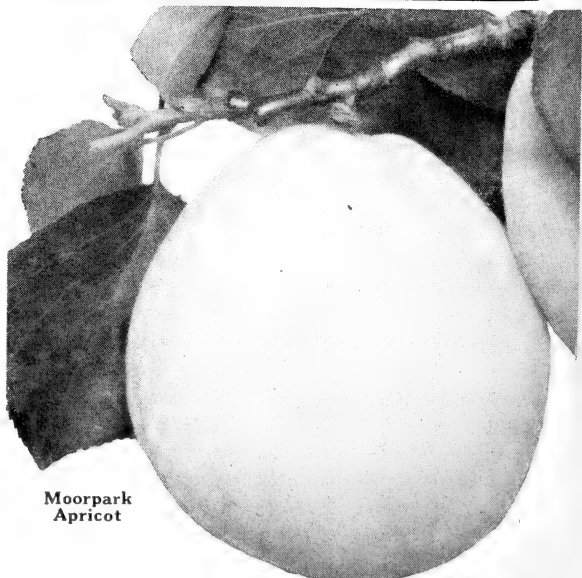
APRICOTS

MOORPARK AND SUPERB

Everyone likes apricots both fresh and in sauce and pies. Why not have 2 or 3 trees of this delicious fruit in your garden? Moorpark is one of the largest kinds. Superb is slightly smaller but more highly flavored. Golden yellow fruit, red cheeked, freestone, sweet and juicy. Tree is quite hardy (about like standard plums) and a heavy bearer—ripens August.

Price: 1 yr. 7/16 in., 3 to 4 ft., each \$1.25;
2 for \$2.40; 3 for \$3.50.

1 yr. 9/16 in., 4 to 5 ft., each \$1.45; 2
for \$2.80; 3 for \$4.10; 6 for \$7.95.



Moorpark
Apricot

GROW GRAPES

A Lifetime of Crops and Profits

Michigan vines rank among the finest grown, and, because of our specially adapted soil and location, you can depend on these of ours. Every one is grown from heavy producing vineyards only, so they will bear full crops of No. 1 grapes

for you. Really good grape vines are scarce because it requires proper soil, fertilization and grading to produce first grade stock. It is no trouble to grow grapes. Few plantings have been made recently, so now is the time to plant.

Fredonia

NEW FREDONIA

A Far Better Extra Early Black

Originated and tested by N. Y. Expt. Station, FREDONIA is the best extra early sort, ripens 10 days before Moore's Early and 3 weeks ahead of Concord. Berries are very large, hang well to the bunch and are firm, juicy and of fine flavor. Skin is thick and tough to make a good shipper. Vine is vigorous and productive with medium size very compact bunches.

Early grapes make the most money and FREDONIA is a fine quality extra early grape far ahead of any other early kind now on the market. The bunches keep their vine-fresh firmness and fine appearance for days after picking. Begin your planting of this new kind this spring.

NEW PORTLAND (White)

Fine Extra Early Grape

Similar to Niagara in its large size bunch and full oval berries. Portland ripens three weeks earlier. Production is heavy, young vines bear early and bear good crops every year. Berries are of good size, fine and sweet in flavor. Vines entirely hardy. Introduced by N. Y. Expt. Station and is proving an excellent profitable grape because it ripens so early and its quality is so good.

CONCORD The Universal Black Grape

Always in good demand—the standard by which all other black grapes are judged. No vineyard or arbor is complete without Concord. Best for market, eating and home use.

It is the main crop for every grower everywhere and produces big crops on any soil every year. After the first expense the cost of up-keep is but little. It is a profitable permanent investment.

Our Concord vines are well rooted, especially adapted to the central west, and guaranteed to reach you in perfect growing condition.

New CACO—(Red)

Big, Sweet, Juicy, Productive

Caco is A-1 in every respect. Hardy, quick bearing, produces every year; fruit beautiful, unusually large size, clear amber color and best of all has a flavor of such sweetness it is a superior table grape.

Always in demand at grape markets with extra prices. Widely endorsed by experiment stations. Vines just as easy to grow as any other. There is always room for a few vines somewhere. Don't be without Caco.

NIAGARA—(White)

Best White Grape for Every Purpose

The best known and most popular of all white grapes, ranks with Concord in heavy bearing, size and quality.

Medium compact, large bunches; berries mostly round, of greenish-white color; very juicy and of excellent flavor, skin is thin but tough and does not crack, making it a fine long-distance shipper. Hardy, vigorous grower.

DELAWARE—(Red)

Long called the standard of excellence of all grapes as a table delicacy. Bunch small, compact; berries small with thin skin and of unusually sweet flavor. Ripens with Concord. Hardy.

It is impossible to tell you how really delicious these little red grapes are. Don't fail to plant a few vines this spring.

1944 PRICES FOR GRAPE VINES

	Each	6	12	25	50	100	300	1000
Caco, 2-yr., No. 1 large size.....	\$.35	\$1.80	\$3.25	\$5.75	\$10.25	\$17.50		
Delaware, 2-yr., No. 1 large size....	.35	1.80	3.25	5.75	10.25	17.50		
Fredonia, 2-yr., No. 1 large size.....	.28	1.35	2.45	4.25	7.75	12.75		
Portland, 2-yr., No. 1 large size.....	.28	1.35	2.45	4.25	7.75	12.75		
Niagara, 1-yr., No. 1.....	.20	.90	1.60	2.50	4.65	7.95		
Niagara, 2-yr., No. 1.....	.25	1.10	1.95	3.15	5.25	9.95		
Concord, 1-yr., No. 1.....	.15	.70	1.25	1.90	3.50	5.95	\$16.50	\$50.00
Concord, 2-yr., No. 1.....	.25	.95	1.80	2.85	4.75	8.75	23.50	70.00

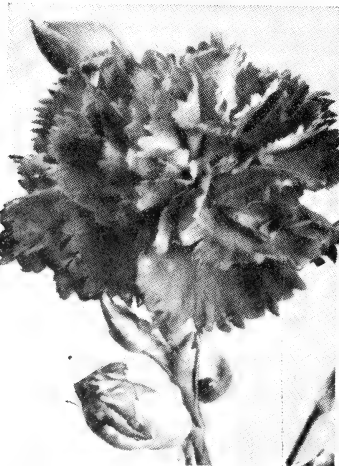
Seedless Concord and Golden Muscat—Description and Prices on Back Cover



Snow-
bird

The
Doctor

Hardy Carnation



CHOICE ROSES

You buy roses for an abundance of bloom. Our bushes are vigorous growers, full of vitality to give you more and finer flowers—well worth a few cents more. All are hybrid tea roses and will flower all summer and early fall. Plant these, big, sturdy, field-grown bushes and have these beautiful new roses this summer.

TREASURE ISLAND—Coppery-pink. Flaming coppery pink, inside of petals light salmon, orange at base; strong stem. Long pointed buds with flowers large and fragrant. Received highest award of Silver Medal at San Francisco Fair.

SNOWBIRD—Pure white. Full petaled, perfectly formed rose of sheer glistening white. Unusually prolific bloomer, strong sturdy grower.

THE DOCTOR—Silvery pink. A great achievement in rose breeding. Large beautiful buds opening to enormous, semi-double, cupped flowers of silvery pink; intensely fragrant. Plants vigorous and bushy.

Price: Each, \$1.10. **All 3 for \$2.60**

HARDY CHRYSANTHEMUMS

Beautiful new kinds, new colors, earlier blooming. Strong, field-grown plants will bloom brilliantly this fall.

Algonquin—Golden yellow, double, early.

Caliph—Blood red, tall grower.

Ember—Orange bronze, very double.

Louis Schling—Salmon bronze, Korean type.

Mandarin—Brilliant orange-bronze.

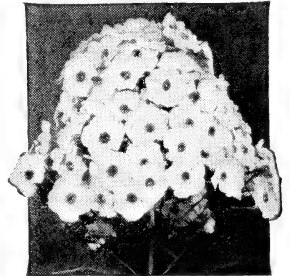
**All 5 for
\$1.69**

**Any 3 for
\$1.29**

Choice Hardy Phlox

"America's Most
Popular Perennial"

These newer varieties grow more thriftily and bring their profusion of larger, more brilliant, true colors year after year during July, August and September. These big strong plants bloomed last summer in the nursery and will flower freely for you this summer. Pick off faded flowers and seed pods to keep new blooms coming. Take this opportunity to get the finest Phlox.



Newer and Much Better Up-to-Date Kinds

Snowcap—Best pure white.

July Glow—Crimson red.

Starlight—Violet with white star center.

Orange Beauty—Deep orange, softly shaded.

Border Queen—Watermelon pink extra large.

Superior, heavy-rooted, field grown, 2 yr. plants—ready to bloom: Each 45c.

All 5 for \$1.47

HARDY PERENNIAL CARNATIONS

Grow this favorite, fragrant, delicately beautiful flower in your garden. Hardy carnations bloom freely in early summer and continue with some flowers later. Single flowers on long stems are ideal for cutting. Here are five of the better kinds in a wide color selection.

Crimson Beauty—red.

Triumph—rose pink.

Snow White—pure white.

King of Blacks—darkest red.

Golden Sun—clear yellow.

Strong field-grown plants—Each, 35c.

All 5 for Only \$1.19

Here's a Rose Offer... That Is An Offer!

SELECTED NEWER
EVERBLOOMING ROSES

5 FOR ONLY
\$2.87

(One Each of Those
Listed Below)

Everyone who loves roses will want this fine collection. All are hardy, 2-year-old, field grown, big strong bushes, ready to flower this Summer. These newer kinds will bring you larger, more beautiful blooms. Easy to grow in any rich, well drained garden soil.

Strong 2-Yr. Field-Grown Bushes.
PRICE: Except Picture, Each 78c; 3 for \$2.10

PINK DAWN—A new rose. Deep rose pink, lightly toned orange; perfectly formed, fully double flowers. Vigorous grower and free-blooming.

McCREDY'S IVORY—Beautiful, clear ivory white. One of the finest.

ETOILE de HOLLANDE—Large crimson, velvety smooth flowers. Fragrant. Large, healthy, well-branched plants.



SUNBURST—Each flower a burst of rich yellow, shaded orange. Well shaped buds and blooms on strong stems.

PICTURE—A newer rose beauty. Velvety, warm pink with under tones of salmon. Very double. Strong, vigorous bush. Price: Each 90c; 3 for \$2.35.

Selected Newer

CLIMBING ROSES

3 FOR ONLY \$1.67 (One Each of Those
Listed Below)

Just think of an arbor covered with a profusion of orange-red Talisman or any of these exquisite new climbers. That is a real rose arbor and far better than any of the older ordinary ramblers.

2-Year Field-Grown, PRICE: Each 65c; 3 for \$1.75

CLIMBING TALISMAN—Golden yellow, stained red and orange-rose.

CLIMBING PAUL'S SCARLET—One of the best and most brilliant climbers. Large flowers over a long season.

JACOTTE—A new climber. Semi-double flowers of orange-yellow tinted coppery-red; in clusters. Strong growing, profusely blooming plant.

Climbing Talisman



Complete Rose Planting

1 each of all 8 Roses on this page
Eight Big Bushes

\$4.29



Hydrangea, P.G.



Forsythia



Hansen Bush Cherry



Weigela, Eva Rathke

Blooming Size SHRUBS

FOR A QUICK SHOWING

Special Offer

5 for \$1.95
YOUR CHOICE

Any Five Shrubs
Listed Below

All our shrubs are not only 2 years old but are 1½ to 2 ft. high. All field grown, heavy, well rooted and branched. They will make a good growth and a fine showing quickly.

FLOWERING ALMOND—Upright grower, 3 to 4 ft. Long branches are thickly studded with small double, delicate pink flowers over their full length, before the leaves appear. Blooms in April.

PRICE: Each, 48c; 3 for \$1.35; 6 for \$2.45

FORSYTHIA INTERMEDIA—Golden Bell. Earliest shrub to bloom. Bright yellow flowers seem the spirit of Spring, opening before the leaves appear. Grows to 6 to 8 ft. but may be pruned as desired. Branches slightly drooping. Dark green leaves.

PRICE: Each, 39c; 3 for \$1.00; 6 for \$1.85

HYDRANGEA P. G.—This showy shrub is perfectly hardy. Large clusters of pure white blossoms, later turning soft pink, from August to late Fall. Superb either singly or in groups; often used as a hedge.

PRICE: Each, 48c; 3 for \$1.35; 6 for \$2.45

SCARLET FLOWERING QUINCE—Scarlet flowers in April and May. Grows 6 to 8 ft. One of the most attractive spring blooming shrubs; blossoms always large, flowering in great masses just as the leaves are coming out. Foliage a dark glossy green.

PRICE: Each, 39c; 3 for \$1.00; 6 for \$1.85

MOCK ORANGE VIRGINALIS—A magnificent new variety. Medium height, compact bush. The flowers (single, semi-double and fully double) are the largest and most sweetly fragrant of any variety, with longest early blooming season. Gaining popularity in every state.

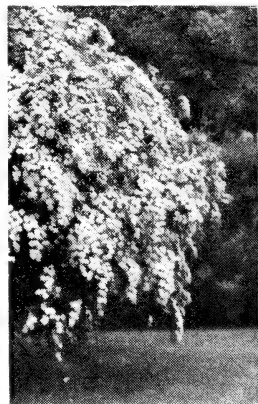
PRICE: Each, 48c; 3 for \$1.35; 6 for \$2.45

SPIREA VAN HOUTTEI—Bridal Wreath. One of the most beautiful and popular of flowering shrubs. In May and June the slender branches droop and form a veritable fountain of snowy white bloom. Thrives anywhere, in shade or sun, wet or dry and grows from 6 to 8 ft. high in good ground. Makes a beautiful ornamental hedge.

PRICE: Ea., 18c; 3 for 50c; 6 for 85c; 12 for \$1.50

WEIGELA EVA RATHKE—Crimson. 3½-4 ft. June flowering. Of smaller growth than the other Weigelas; decidedly spreading. A profusion of flowers brilliant crimson with white throats is its outstanding characteristic. It is especially showy.

PRICE: Each, 48c; 3 for \$1.35; 6 for \$2.45

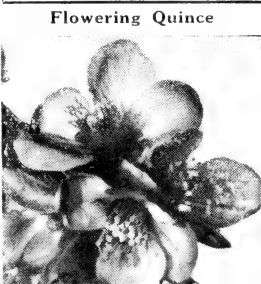


Spirea, Van Houttei

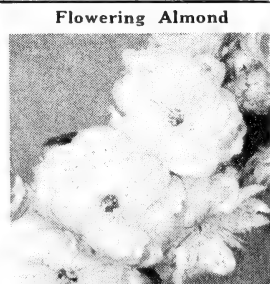
HANSEN BUSH CHERRY

The fruit of this fine ornamental shrub is good to eat. Fruits are large as the average cherry; have a new, delicious flavor; excellent fresh and for jam and jelly. White flowers in spring, red and gold foliage in autumn. Hardy everywhere, grows to about 4 to 5 ft.; bears immense crops annually.

PRICE: Each, 45c; 3 for \$1.25; 6 for \$2.25.



Flowering Quince



Flowering Almond



Mock Orange, Virginalis



Choice DAHLIAS

6 For \$1.25

Selected
Newer Kinds

The varieties in this collection are selected from more recent new introductions and regularly sell at many times this price. Here you have a wide range of color and shape of flower. Plump, strong tubers make fine flowers this summer. You will be proud of these beautiful, perfect blooms in your garden.

- JERSEY'S BEAUTY—finest of all pinks.
- JANE COWL—massive bronze.
- THE COMMODORE—large canary yellow.
- PRIDE OF CALIFORNIA—popular brilliant red.
- MRS. de VER WARNER—large orchid lavender.
- MRS. CARL SALBACH—lavender pink.

Here's \$10.00 Worth of Flower Growing Pleasure

SPECIAL Gladiolus Offer

Assorted Colors—Big Bulbs

Different varieties, different colors—our own selection that blends beautifully; flowers all summer.

Remember—these are not small bulbs usually sold at a low price, but every one is large in size and ready to bloom the first Summer. Order as many as your garden will permit. **ORDER EARLY.**



10
BULBS

25
BULBS

50
BULBS

29c

56c

98c

ORDER THIS "RAINBOW OF COLOR" TODAY!



Cushion Mums

Hundreds of Beautiful Blooms from
August to Frost

These marvelous new type chrysanthemums begin to bloom in August and continue their lovely, brilliant and many colored flowers until late fall and heavy frosts. Literally hundreds of blooms on one plant—a mass of color 2 feet high and 2 to 3 feet across. All this beautiful flower growth comes this first summer from the plants you receive and put out this spring. A hardy perennial that will increase in size and beauty each year. Our plants are all grown from carefully selected, heavy flowering, clear colored, established plants. Plant about 18 to 24 inches apart in any good soil. Ideal for borders, in clumps, or a spot of color wherever you want it.

Pink, Bronze, White, Yellow—40c each.
Order Plenty at Our Special Collection Offer.

All 4 for \$1.19

VEGETABLE SEEDS For Your VICTORY GARDEN



In response to requests of many customers we are glad to offer this year fine seed for your vegetable garden—and every garden is a Victory Garden. These seeds are grown for us by one of the foremost seedsmen of the country, and are the finest seeds obtainable. They are full of the vitality needed to produce a big crop of healthful vegetables for you. Our government tells us that this year even more than last, everyone who can will need to have his own garden to make the supply go around.

Here you have a large and small collection for large and small space. Kinds and quantities are carefully selected to make a wide variety of vegetables. If you want tomatoes or cabbage it is best to get plants that are ready to transplant at your local greenhouse. All packets are standard size, containing liberal amount of seed. Complete planting and cultural directions printed on each packet.

Many gardeners were disappointed in getting seed last year. We suggest you order at once and your order will be mailed immediately. Order as many collections as you want.



SMALL COLLECTION
Will plant about 445 ft. of row, or space
25 x 40 ft.

Corn, Golden Bantam	1-lb.
Bean, Burpee's Stringless Green Pod	1/2-lb.
Bean, Fordhook, Bush Lima	1/2-lb.
Pea, Thomas Laxton	1/2-lb.
Beet, Early Wonder	1/2-lb.
Radish, Scarlet Globe	1-pkt.
Lettuce, Black Seeded Simpson	1-pkt.
Carrot, Chantenay	1-pkt.
Turnip, Purple Top White Globe	1-pkt.

ALL FOR \$1.35

POSTPAID in Michigan, Illinois, Indiana, Ohio, Wisconsin. Elsewhere add 5c for postage.

LARGE COLLECTION
Will plant about 965 ft. of row, or space
50 x 40 ft.

Corn, Golden Bantam	1-lb.
Bean, Burpee's Stringless Green Pod	1-lb.
Bean, Fordhook, Bush Lima	1-lb.
Pea, Thomas Laxton	1-pkt.
Beet, Early Wonder	1-pkt.
Radish, Scarlet Globe	1-pkt.
Lettuce, Black Seeded Simpson	1/2-oz.
Carrot, Chantenay	1-pkt.
Turnip, Purple Top White Globe	1-pkt.
Cucumber, Black Diamond	1-pkt.
Squash, Summer Crookneck	1-pkt.
Spinach	1-pkt.

ALL FOR \$2.29

POSTPAID in Michigan, Illinois, Indiana, Ohio, Wisconsin. Elsewhere add 10c to cover postage.



TO KEEP YOUR GARDEN Free from BUGS

Use Our BUG-DUST-O-CIDE

Include it with your Order

Gives A-1 protection to vegetables from a wide variety of both sucking and chewing insects and certain plant diseases such as powdery mildew and black spot. Contains Rotenone. Bug-Dust-O-Cide is non-poisonous to humans, and domestic animals when used as directed. That means you can use it on eatable vegetables. Conveniently applied with handy refillable dust gun included in combination offers. Gun holds 1 lb. and is easily operated by pumping stroke.

2 1/2 lbs. With handy new refillable gun, holds 1 lb. **\$1** | 1 lb. Bug Dust with gun .60c | 3 lbs. Bug Dust without gun \$1.00

Postpaid in Michigan, Illinois, Indiana, Ohio, Wisconsin. Elsewhere add 3c per pound for postage.



Instructions for Ordering—Please Read Carefully

LOCATION—Bridgman, Berrien County, Southwestern Michigan—the heart of the “Michigan Fruit Belt” on Lake Michigan. Fast service to Chicago trunk lines east, west, north, south.

PARCEL POST SHIPMENTS—See Table Below. Locate the group in which you live and then figure amount of postage to send from table below. Cheaper for small orders. Prompt delivery to your door. If you request mail shipment, but include no postage in your remittance we will ship C. O. D. for exact postage required.

EXPRESS SHIPMENTS—Reduced rates from Bridgman now make express cheapest for all except small orders. All shipments insured. Rapid handling and safe delivery guaranteed. Generally the best way of shipment. Charges not prepaid.

SHIPPING SEASON—SPRING—From about March 15th to May 25th, according to season. Fall—October 15th to November 15th.

PACKING—No charge. All plants packed in damp moss or shingle tow. Will keep in good condition 5 days to 2 weeks, according to time of shipment and weather conditions. Each variety carefully separated and correctly labeled.

SUBSTITUTION—Not without your permission except on late orders when time is often saved by substituting varieties of same season and value as those ordered. Satisfaction guaranteed on substitutions.

HOW TO ORDER—Write your name and address plainly on this order blank. Indicate “Mail”, “Express”, or “Our Judgment”, as you prefer. If express shipment, be sure there is an express office at the destination you give. Send remittance. Orders acknowledged.

PRICES—All F.O.B. Bridgman, Michigan. Any increase in the cost or selling price of nursery stock listed in this catalog made necessary by state or federal taxes or legislation, by inflation, or by other causes beyond our control may be added.

TERMS—Orders of \$5 or less, please send cash with order; if more than \$5.00, you may remit 25 per cent of total with order, balance before shipment if you prefer. If you request, we will make C. O. D. shipments up to May 1st, when 25 per cent of total amount is sent with order; no discount allowed.

REMITTANCE—Postoffice Money Orders are safest. Express Money Orders, Bank Drafts and Checks accepted. If you send Currency register your letter.

REFERENCE—The State Savings Bank, Bridgman, Mich., Express Agent or Postmaster, Bridgman, Mich.

COMPLAINTS—All complaints, as to condition on arrival, shortage, or errors must be made within five days after stock is received. This allows ample time to examine shipments and if there is anything wrong, advise at once. Complaints as to condition on arrival must be accompanied by express or postoffice receipt showing statement of bad condition.

PARCEL POST TABLE

- GROUP NO. 1—SOUTHERN MICHIGAN** (Grand Rapids, Port Huron, Owosso and all towns south thereof.)
NORTHERN INDIANA (Indianapolis and all towns north thereof.)
GROUP NO. 2—NORTHERN MICHIGAN (Towns north of Grand Rapids, Owosso and Port Huron.)
SOUTHERN INDIANA (Towns south of Indianapolis.) **ILL., IOWA, OHIO, KY., WISC.**
GROUP NO. 3—ARK., DEL., KANS., MD., MINN., MO., NEBR., N. J., N. Y., NO. CAR., PA., TENN., VA., W. VA.
GROUP NO. 4—All states not included in the other three groups.

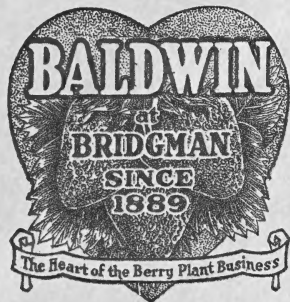
		Group No. 1	Group No. 2	Group No. 3	Group No. 4
Strawberry and Asparagus	100 plants	\$.12	\$.18	\$.25	\$.40
Red Raspberry, Dewberry, 1-yr. plants	100 plants	.20	.30	.45	.85
Black Raspberry, Blackberry, Boysenberry, 1-yr.	100 plants	.20	.30	.45	.85
All 2-yr. Transplants	100 plants	.30	.50	.75	1.25
Grape Vines	25 plants	.12	.18	.25	.40
Rhubarb Roots	12 plants	.10	.13	.17	.25
Gladiolus	25 bulbs	.10	.13	.17	.25
Fruit Trees	1 tree	.10	.13	.17	.25
	5 trees	.15	.21	.40	.25
Each Collection of Dahlias, Roses, or Perennials		.10	.13	.17	.65
Blueberries and Shrubs	6 Bushes or less	.12	.18	.25	.40

Our Michigan Certificate of Nursery Inspection is Attached to Every Package

From _____

P. O. _____

R. F. D. _____ State _____

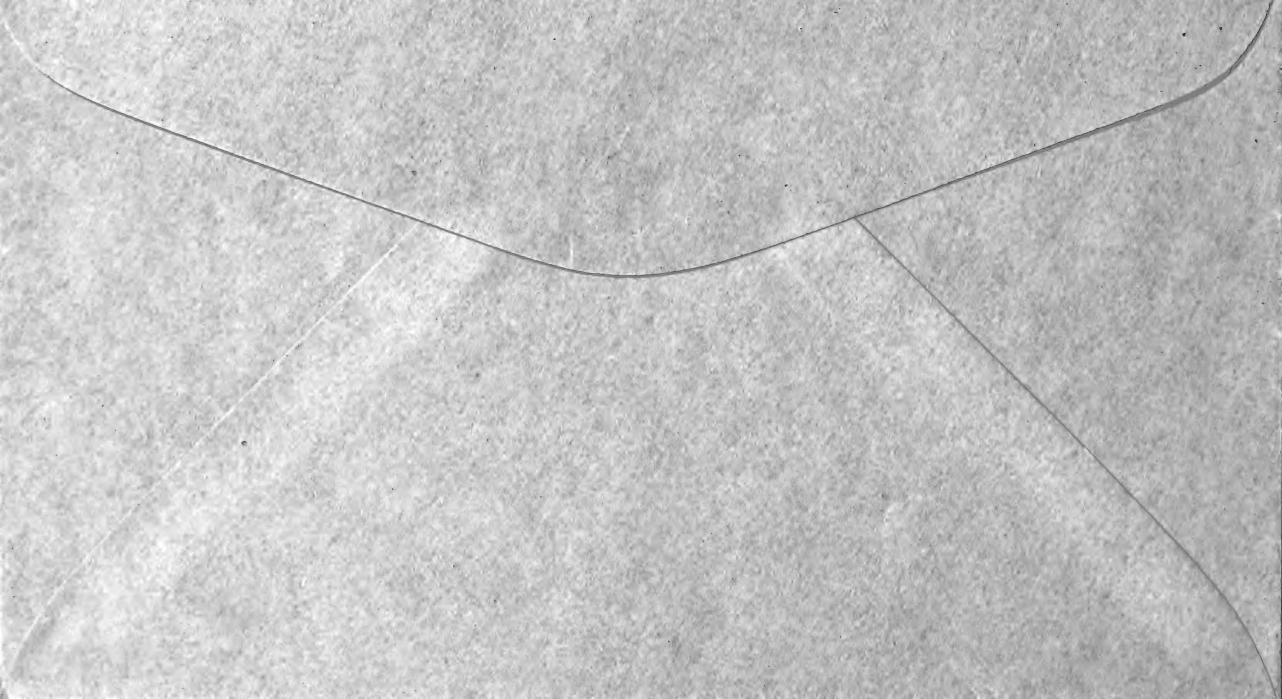


O. A. D. BALDWIN NURSERY

BRIDGMAN

MICHIGAN

"Hardy Michigan Grown Nursery Stock"



**THE
NEW**

Giant Blueberries

Ornamental as Well as Enormously Productive

These genuine cultivated Blueberries have been originated and improved by government experiment to produce big yields of giant size, deliciously sweet berries. Berries 3 to 4 times the size of wild kinds. Now every garden can have enough of this healthful fruit for canning and pies—2 to 6 bushes. Two or three varieties to lengthen the season are advised. Ripen from early July to late August. Bushes make a beautiful and useful ornamental shrub.

RANCOCAS. Midseason. Hardy, vigorous, productive; very large, firm berries of excellent sweet flavor.

HARDING. Midseason to late. Sweetest of all. Hardy, very productive; spreading growth. Longer fruiting season.

JERSEY. Late. Largest of 10 leading kinds, of fine appearance and average yield. Jersey is one of the best cultivated blueberries. Strong sturdy bushes.

RUBEL. Very late. Hardy, vigorous and very productive, upright grower; large, extra firm berries of good quality. Recommended for commercial use.

PRICES OF BLUEBERRY PLANTS

2-yr., No. 1, sure to grow; start to bear second season: 2 for \$1.95; 4 for \$3.55; 6 for \$4.85; 12 for \$9.20; 25 for \$17.65.

3-yr., No. 1, bearing-age bushes: Each \$1.45; 2 for \$2.65; 3 for \$3.90; 6 for \$6.95. (Jersey and Rubel only.)

4-yr., No. 1, large size, bearing-age bushes: Each \$2.15; 2 for \$3.95; 3 for \$5.40; 6 for \$10.25. (Jersey and Rubel only.)

Blueberries can be grown satisfactorily on sandy or muck soil that is strongly acid and well supplied with water. Soil not acid can be made so by mixing in acid peat, rotted leaves, or humus.

Blueberries For Market

Cultivated Blueberries for market are profitable, selling retail from 35c to 65c per quart. Berries are firm and ship well. Many new plantings are being made because profits are good.

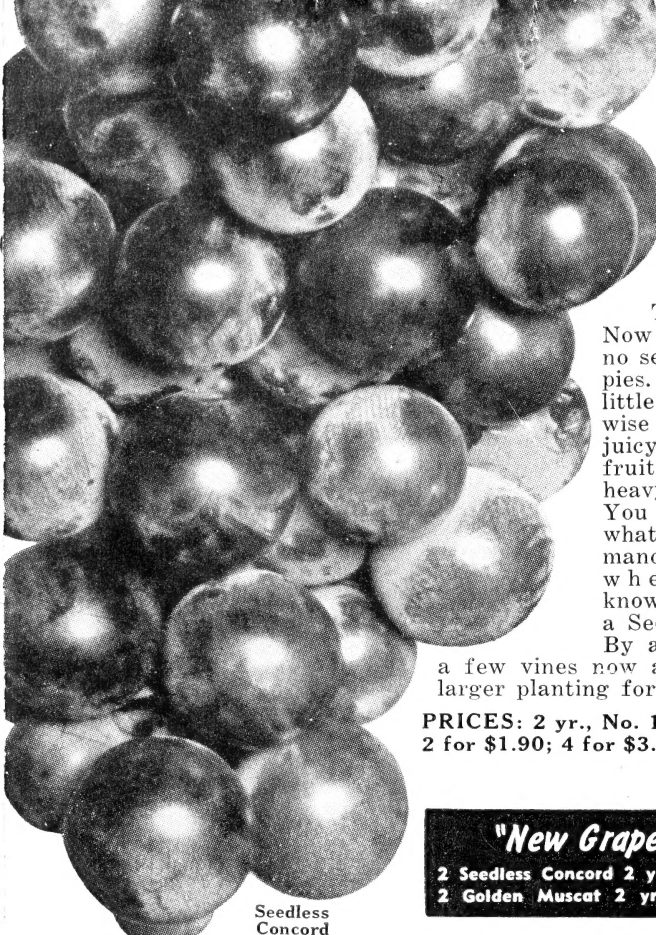
Bushes last a lifetime and require no unusual care, yields vary from 3 to 9 quarts per bush depending on age. Plant 5 to 7 feet apart. Of the many varieties being offered we have selected the 4 that in our opinion are best, most productive.



**NEW FRUIT
GARDEN**

3 Blueberry.
2-yr.
12 Boysenberry.
1-yr. (thorny).

ONLY
\$3.47



Seedless Concord

Two New Grapes That Are Different

SEEDLESS CONCORD

Think what this means in grape enjoyment. Now you can have the old delicious Concord with no seeds to bother with for eating, jellies, jams, pies. These new Seedless Concord grapes are a little smaller than standard Concord but otherwise have the same rich blue color, delicious, juicy, fine-flavored fruit, and hardy heavy-bearing vine. You can foresee what a market demand there will be when consumers know they can get a Seedless Concord. By all means plant

a few vines now and plan for a larger planting for market.

PRICES: 2 yr., No. 1—Each, \$1.00; 2 for \$1.90; 4 for \$3.55; 6 for \$4.75.

"New Grape" Offer
2 Seedless Concord 2 yr. No. 1 **ONLY \$2.78**
2 Golden Muscat 2 yr. No. 1

GOLDEN MUSCAT

California-Type Grapes
Now Hardy in the North

Here you have all the delicious, mild, sweet flavor; firm, meaty flesh; wonderfully fragrant aroma; and large size, beautiful, waxy, golden yellow fruit of the true California muscat. By crossing with hardy northern varieties these Golden Muscat vines are hardy and can be grown anywhere our northern grapes are grown. Golden Muscat should be money-makers because of their size, color, high flavor and unusual firmness and good shipping qualities. (Not a California grape.) Begins to ripen about 10 days after Concord. Now you can grow these delicious, California-type grapes yourself.

PRICES: 2 yr., No. 1—Each 80c; 2 for \$1.55; 4 for \$2.90; 6 for \$3.85.



Golden Muscat

HANSEN BUSH CHERRY

Ornamental Shrub—Valuable Fruit

(See page 28)

O. A. D. BALDWIN NURSERY

Bridgman, Michigan